

# INSTALLATION INSTRUCTIONS

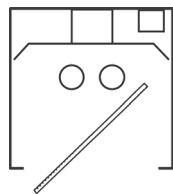
## DL SERIES Drywall Mounting

Down Lights can be used alone or mix and matched with our AAM Series Adjustable Accent Lights or our DW or MP Series Wall Washers.

FOR SUPPLY CONNECTIONS ENTERING THIS FIXTURE USE WIRE SUITABLE FOR AT LEAST 90° C

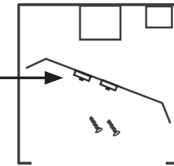
### \* INSTALLATION TO BE DONE IN ACCORDANCE WITH *NEC* AND APPLICABLE CODES \*

- When installing the fixtures, **ALLOW AN EXTRA 3/8" wide x 1" high CLEARANCE** around the fixture housing. This will allow the fixture trim to snap back on the housing after installation is complete.
- Fixtures must be installed so that the **bottom edge of the housing PROTRUDES 1/8" FROM THE FINISH SURFACE**. To correct the height, **adjust the mounting brackets with the screws inside the fixture housing**.
- Remove the "Lift & Shift" lens that sits on the edge of the housing by tilting it up at an angle to maneuver it out of the face of the fixture.
- Remove the reflector by removing the screws, for access to the ballast or LED driver.



LIFT & SHIFT LENS

CAREFUL!! LED Version has LEDs attached to the reflector!

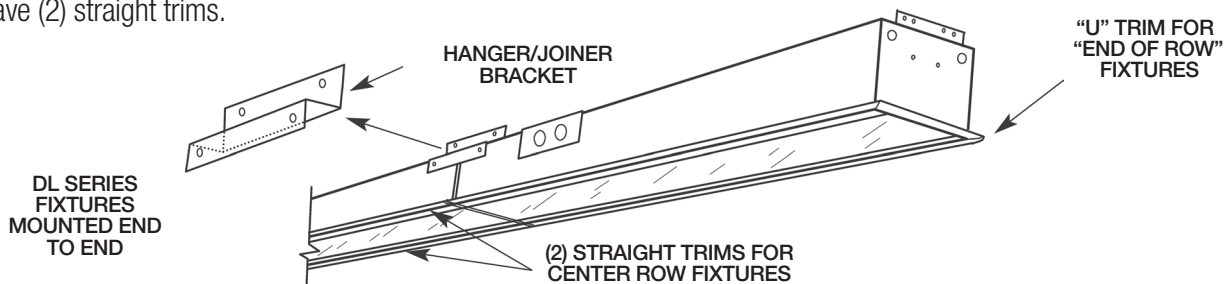


RELEASE REFLECTOR WITH SCREWS

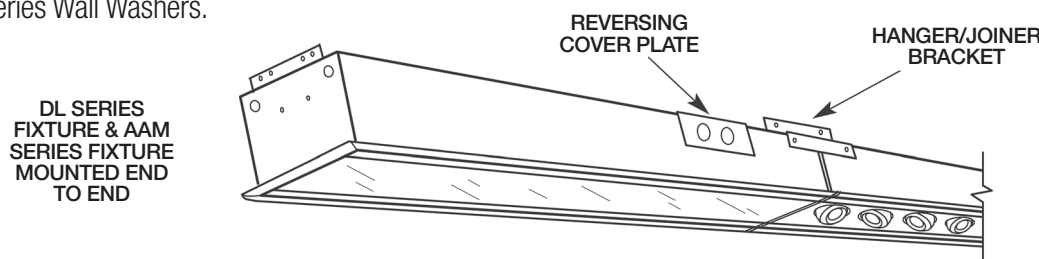
- Attach the conduit to the K.O.s in the cover plate and make wire connections. **Note the DL Series fixtures have a reversing cover plate that will allow you to make connections from the side or the back of the housing.**

### REPLACING THE LENS AND SNAPPING ON THE TRIM SHOULD BE THE LAST STEP AFTER ALL FINISH WORK IS DONE.

- Individual fixtures are provided with a full finish trim for the fixture. For "DLCC" continuous, end to end installations, fixtures are provided with special mounting brackets and trims. Hanger/Joiner brackets are provided for fixture joints to help align and install the fixture housings. Trims for "end of row" fixtures are provided with "U" trims and center fixtures have (2) straight trims.

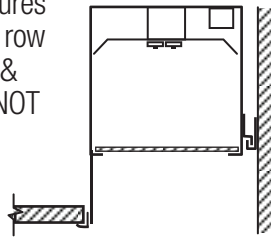


- Fixtures may also be mixed and matched with our AAM Series Adjustable Accent Lights or our DW or MP Series Wall Washers.





DL Series Down Light fixtures mounted in a Continuous row at the wall, utilizing 2', 3' & 4' fixtures. System does NOT provide corners.



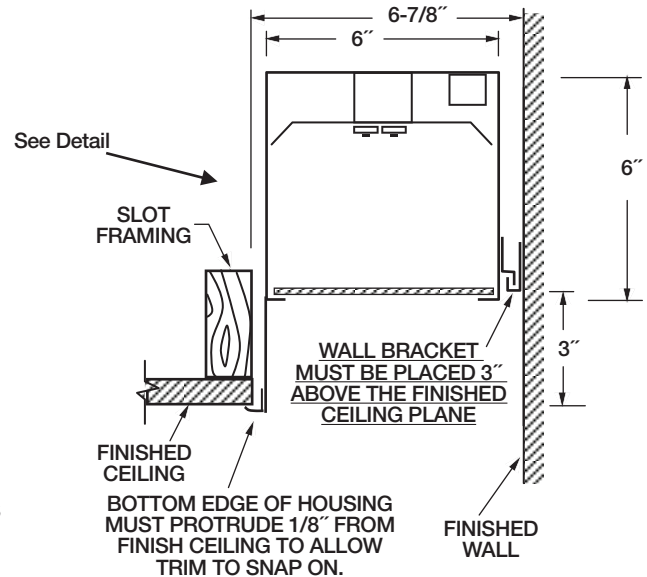
# INSTALLATION INSTRUCTIONS

## DL SERIES– Continuous Slot Drywall Mounting for Recessed Slot

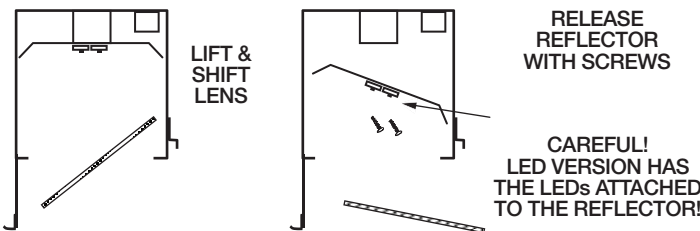
FOR SUPPLY CONNECTIONS ENTERING THIS FIXTURE USE WIRE SUITABLE FOR AT LEAST 90° C

**\* INSTALLATION TO BE DONE IN ACCORDANCE WITH NEC AND APPLICABLE CODES \***

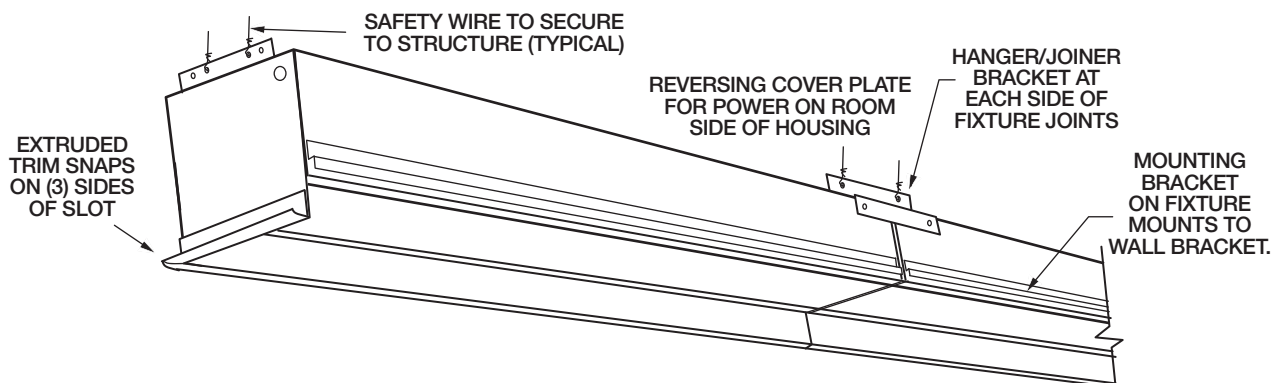
- When installing the fixtures. **ALLOW AN EXTRA 3/8" wide x 1" high CLEARANCE** around (3) sides of the continuous slot of fixture housings where it joins the ceiling. Fixtures must be installed so that **the bottom edge of the housing PROTRUDES 1/8" FROM THE FINISH CEILING SURFACE**. This will allow the fixture trim to snap on to housings on three sides of the slot.
- Remove the "Lift & Shift" lens that sits on the ledge in the housing by tilting it up at an angle to maneuver it out of the face of the fixture. Remove the Reflector by removing the screws, for access to the driver.



Wall mounting bracket and Fixture placement should align against the wall and framing per detail.



- Fixtures for Drywall "Wall Slot" installations are provided with wall bracket to attach fixture at the wall. Fixtures mount end to end along the wall and are to be framed on the remaining three sides as detailed above. Secure the fixture to the structure per local codes (typical as shown). Make wire connections through K.O.'s in the cover plate. Reversing cover plate allows power connection from the side or top of fixture. Through wiring holes are provided in fixture housing end plates.



**REPLACING THE LIFT & SHIFT LENS AND SNAPPING ON TRIM SHOULD BE THE LAST STEP AFTER PAINTING AND FINISH WORK**