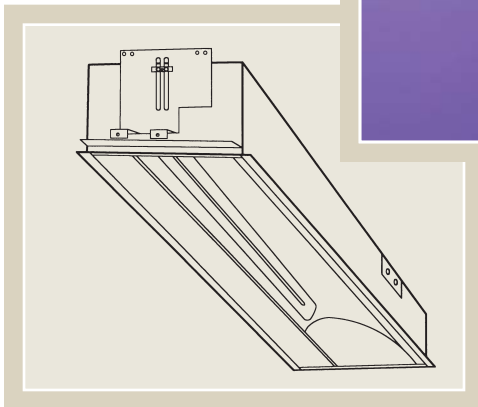
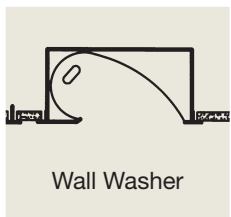


**ELP**

ENGINEERED LIGHTING  
PRODUCTS

## MAXI-TB SERIES

RECESSED Wall Washer For High T-Bar Ceilings



*Ideal placement (depending on wall height) is 48" to 66" from the front edge of fixture to the surface you are lighting, for 12' to 14' ceilings.*

### **System**

The optics are designed for retail spaces with high ceilings, to provide 40% more light than typical wall wash fixtures in the critical merchandise area from 4' to 7' height. The formed, high purity aluminum reflectors provide even, unscalped illumination with excellent lamp shielding from the normal viewing angle.



TYPE:  
CATALOG #:  
JOB:

## RECESSED Wall Washer For High T-Bar Ceilings

### Specifications

Recessed fluorescent wall washer for use with Biax, T-5 and T-8 lamps for T-Bar installations. The fixture is 5" deep with ballast(s) mounted in the housing. The one piece formed reflector is high purity aluminum (99.9%) with 95% reflectance. It is easily removable without tools for access to the ballast and wiring. Reflector design provides even unscalped illumination with complete lamp shielding even when viewed directly beneath the fixture.

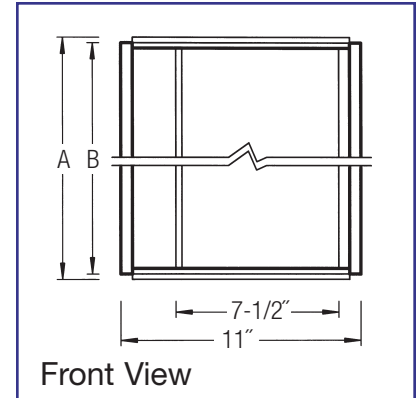
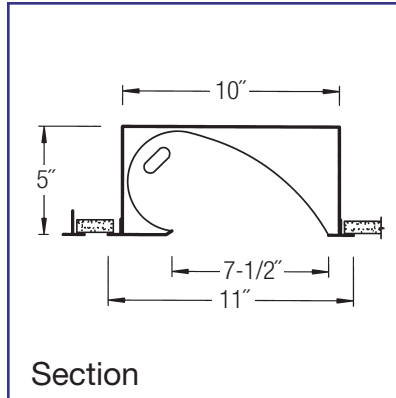
TGIC polyester powder coated housing is made of 22 gauge CRS with cover and knock-outs that provide quick wire access to side or back of fixture for through wiring. All fluorescent fixtures are supplied standard with Luminaire Disconnect.

UL/CUL Damp Location listed.

**U.S. Patent #5,142,459**

### Options

- Ballast 120 or 277 HPF Electronic (Standard)  
Dimming (Some models) -DM  
Emergency (Some models) -EPP
- Finish White (Standard)  
Custom -Custom
- Reflectors Diffuse Silver (Standard)  
Specular Silver -SP  
Painted White -W
- Louver Diffuse Silver Parallel Blade -LV



Model No.	A	B	Lamp
140 BXWW-MTB	23-7/8"	23-7/16"	40 watt Biax
150 BXWW-MTB	23-7/8"	23-7/16"	50 watt Biax
155 BXWW-MTB	23-7/8"	23-7/16"	55 watt Biax
240 BXWW-MTB2†	23-7/8"	23-7/16"	(2) 40 watt Biax
250 BXWW-MTB2†	23-7/8"	23-7/16"	(2) 50 watt Biax
255 BXWW-MTB2†	23-7/8"	23-7/16"	(2) 55 watt Biax
240 BXWW-MTB	47-7/8"	47-7/16"	(2) 40 watt Biax
250 BXWW-MTB	47-7/8"	47-7/16"	(2) 50 watt Biax
255 BXWW-MTB	47-7/8"	47-7/16"	(2) 55 watt Biax
440 BXWW-MTB†	47-7/8"	47-7/16"	(4) 40 watt Biax
450 BXWW-MTB†	47-7/8"	47-7/16"	(4) 50 watt Biax
455 BXWW-MTB†	47-7/8"	47-7/16"	(4) 55 watt Biax
214 T-5WW-MTB	23-7/8"	23-7/16"	(2) 14 watt T-5
224 T-5WW-MTB	23-7/8"	23-7/16"	(2) 24 watt T-5 HO
228 T-5WW-MTB	47-7/8"	47-7/16"	(2) 28 watt T-5
254 T-5WW-MTB	47-7/8"	47-7/16"	(2) 54 watt T-5 HO
217 T-8WW-MTB† (add 'CC' if mounting end to end)*	24"	23-7/16"	(2) 17 watt T-8
232 T-8WW-MTB† (add 'CC' if mounting end to end)*	48"	47-7/16"	(2) 32 watt T-8

\* No more than 5 in a row.

† Double lamp fixtures.

