



INSTALLATION INSTRUCTIONS

AKCC SERIES
 DWCC SERIES
 MAXI-CC SERIES
 MPCC SERIES
 Continuous Ceiling Mount

The ideal placement of the fixtures, from the surface being lighted to the front edge is:

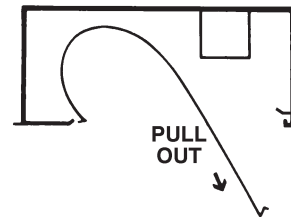
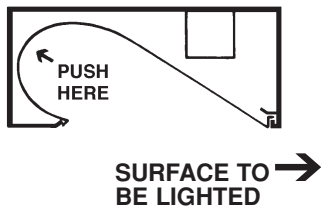
- AKCC and MPCC Series – between 24" & 36"
- DWCC Series – between 8" & 12"
- MAXI-CC Series – between 48" & 66"

FOR SUPPLY CONNECTIONS ENTERING THIS FIXTURE WITHIN 3 INCHES OF A BALLAST USE WIRE SUITABLE FOR AT LEAST 90° C

*** INSTALLATION TO BE DONE IN ACCORDANCE WITH NEC AND APPLICABLE CODES ***

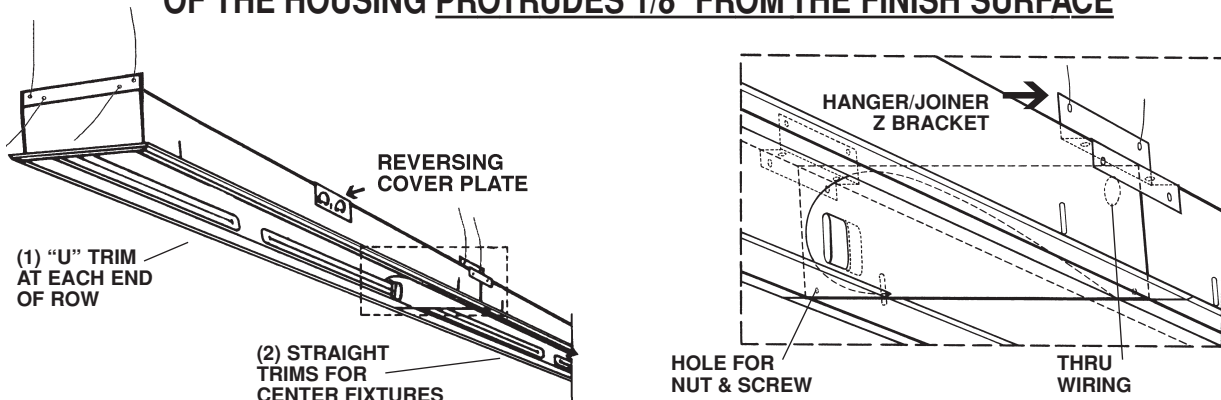
ALUMINUM REFLECTOR CLEANING: Clean reflector with soap & water or alcohol, i.e. Isopropyl Alcohol or other neutral PH factor solvents. Cleaning material should be non-abrasive. **DO NOT** use Ammonia & alkali solutions.

1. To remove the reflector, push in towards housing on the lamp side with your hand. This will dislodge the opposite side of the reflector.
2. Pull the reflector out from the dislodged side.



3. Install fixtures in a continuous row with provided hanger/joiner brackets on each side of fixtures. Use four #8 self-tapping screws for brackets and two 6-32 x 3/8" screws and nuts for holes at the front inside edge of housings (both by others). **Or** – frame in fixtures and mount directly to the studs (still use the brackets, screws and nuts at fixture joints). Fixtures should be snug, end to end. **THE PERIMETER OF A CONTINUOUS INSTALLATION ROW MUST HAVE AN EXTRA 3/8" WIDE X 1" HIGH CLEARANCE** to allow trims to snap on.

FIXTURES MUST BE INSTALLED SO THAT THE BOTTOM EDGE OF THE HOUSING PROTRUDES 1/8" FROM THE FINISH SURFACE



4. Attach the conduit to the K.O.s in the cover plate and make wire connections. **Note: These fixtures have a reversing cover plate that will allow you to make connections from the side or back of housings and holes for through wiring.**

REPLACING THE REFLECTOR AND SNAPPING ON TRIMS SHOULD BE THE LAST STEP – AFTER PAINTING AND FINISH WORK

REMOVE THE PROTECTIVE PEEL AND REPLACE REFLECTOR – SNAP ON TRIMS.

INSTALLATION INSTRUCTIONS

**AKCW SERIES
MPCW SERIES
Continuous Wall Mount**

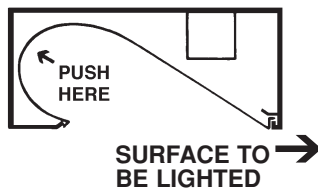
The ideal placement as an indirect up-light would be at least 6'2" from the finish floor to the fixture opening for optimum visual cut-off.

FOR SUPPLY CONNECTIONS ENTERING THIS FIXTURE WITHIN 3 INCHES OF A BALLAST USE WIRE SUITABLE FOR AT LEAST 90° C

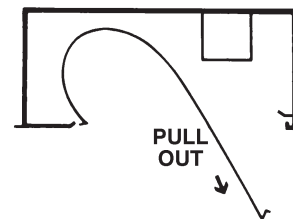
*** INSTALLATION TO BE DONE IN ACCORDANCE WITH NEC AND APPLICABLE CODES ***

ALUMINUM REFLECTOR CLEANING: Clean reflector with soap & water or alcohol, i.e. Isopropyl Alcohol or other neutral PH factor solvents. Cleaning material should be non-abrasive. **DO NOT** use Ammonia & alkali solutions.

1. To remove the reflector, push in towards housing on the lamp side with your hand. This will dislodge the opposite side of the reflector.

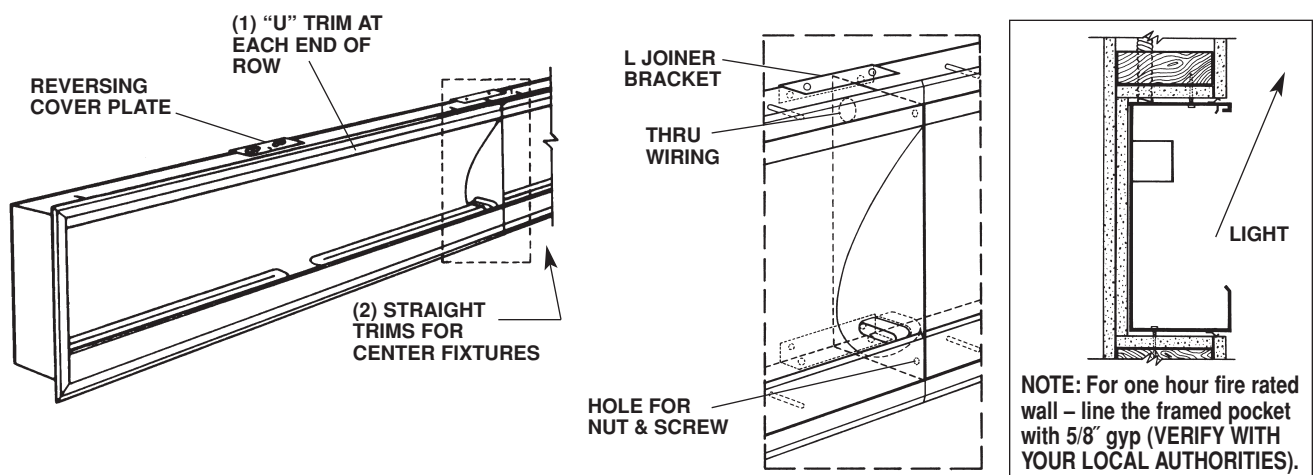


2. Pull the reflector out from the dislodged side.



3. Frame in the opening for the continuous run of fixtures. **THE PERIMETER OF A CONTINUOUS INSTALLATION ROW MUST HAVE AN EXTRA 3/8" WIDE X 1" HIGH CLEARANCE** to allow trims to snap on. Install fixtures continuous using provided joiner brackets on each side of the fixtures. Use four #8 self-tapping screws for brackets and two 6-32 x 3/8" screws and nuts for holes at the front inside edge of the housing (both by others). Fixtures should be snug, end to end. Secure to structure.

FIXTURES MUST BE INSTALLED SO THAT THE OUTSIDE EDGE OF THE HOUSING PROTRUDES 1/8" FROM THE FINISH SURFACE



4. Attach the conduit to the K.O.s in the cover plate and make wire connections. **Note: These fixtures have a reversing cover plate that will allow you to make connections from the side or back of housings and holes for through wiring.**

REPLACING THE REFLECTOR AND SNAPPING ON TRIMS SHOULD BE THE LAST STEP - AFTER PAINTING AND FINISH WORK

REMOVE THE PROTECTIVE PEEL AND REPLACE REFLECTOR - SNAP ON TRIMS.