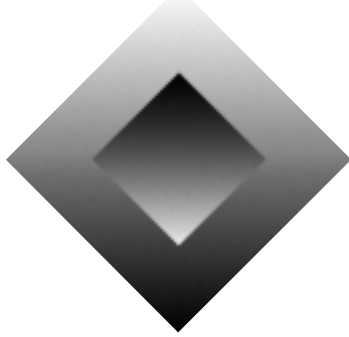


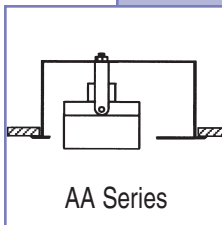
**ENGINEERED
LIGHTING PRODUCTS**



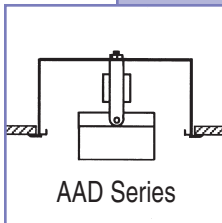
ADJUSTABLE ACCENTS

AA & AATB SERIES AAD & AADTB SERIES

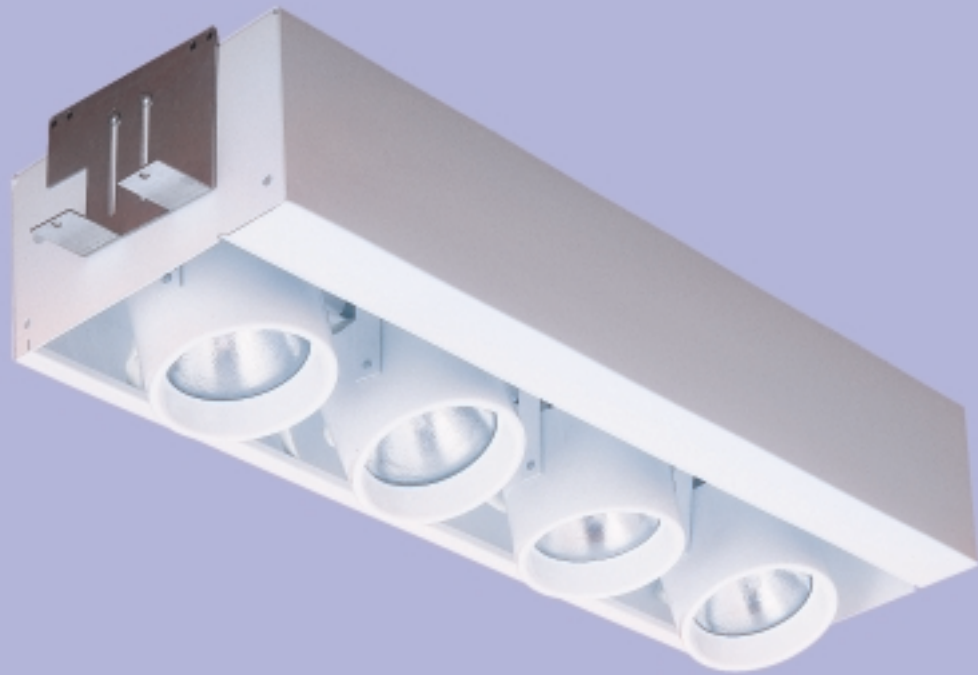
*RECESSED Adjustable Accent Downlights
For Drywall and T-Bar*



AA Series



AAD Series



AA-TB Series T-Bar Fixture



AAD-TB Series T-Bar Fixture

*RECESSED multi-head adjustable
accent downlights designed
to reduce ceiling clutter.*



TYPE:
CATALOG #:
JOB:

AA & AATB SERIES

Tungsten Halogen

*RECESSED Adjustable Accents for Drywall and T-Bar
To match the look of the AK & AKTB Series Wall Washers*

SYSTEM

Recessed fixture with four MR-16 or Par 30 adjustable accent lights. Fixture is designed to look similar to our *AK & AKTB Series* wall wash fixtures and may be used in conjunction with them.
UL/CUL Damp Location listed.

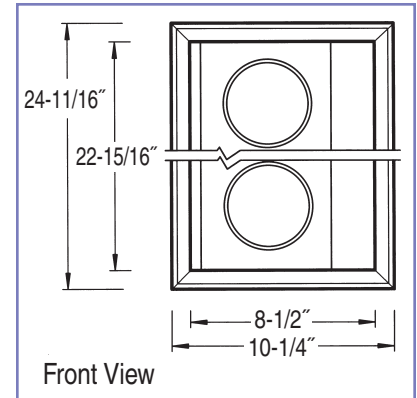
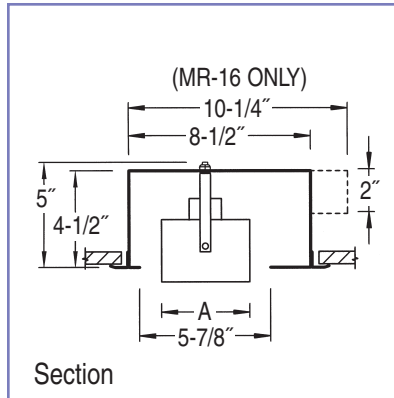
SPECIFICATIONS

Recessed housing with four adjustable accent lights for use with 50 watt MR-16 or Par 30 lamps in T-Bar or drywall installations. Individual lamp heads allow 290° swivel and 40° tilt. The 5" deep housing allows access to the fixture wiring when the wire channel is removed. An additional access panel is provided in the MR-16 fixture for access to the 12 volt transformers. Springs secure the lamps within the cylinder and protective glass lamp shields are provided for the MR-16 fixtures.

TGIC polyester powder coated housing is made of 22 gauge CRS with cover and knock-outs that provide quick wire access to the back of fixture for through wiring. The trim for drywall fixtures is extruded aluminum.

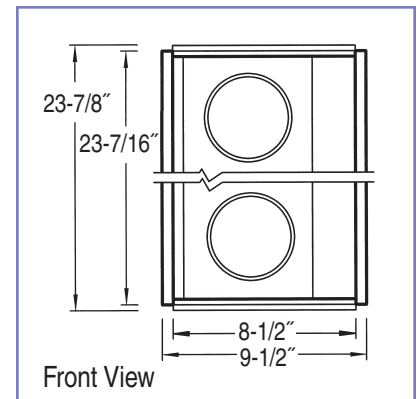
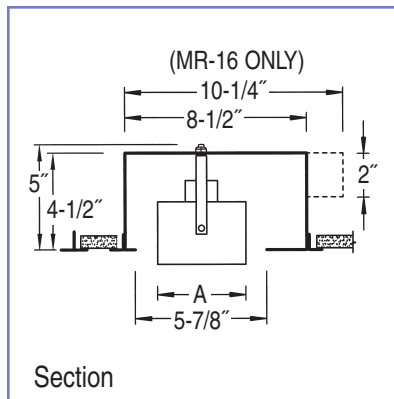
OPTIONS

Finish	White (Standard) Custom -Custom
Lens	Color (Specify) Spread -SPL
Louver	Honey Comb -LVB



AA SERIES for Drywall Installations

Model No.	A	Rough-In Dimensions	Lamp
450 MR-16AA	3"	9-1/8" x 23-1/2"	(4) 50 watt MR-16
450 PAR30AA	4-1/8"	9-1/8" x 23-1/2"	(4) 50 watt Par 30

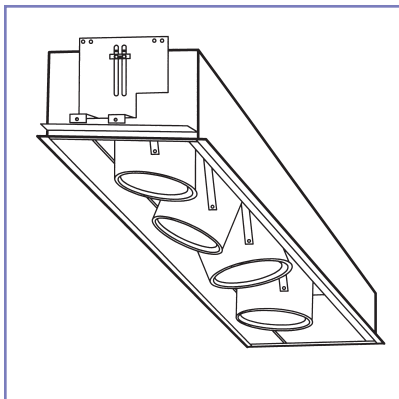


AATB SERIES for T-Bar Installations

Model No.	A	Lamp
450 MR-16AATB	3"	(4) 50 watt MR-16
450 PAR30AATB	4-1/8"	(4) 50 watt Par 30

Continuous Mount – If the fixtures are being mounted in a continuous row in a drywall ceiling, add "CC" to the catalog number and provide the row configuration (i.e. (6) 12' rows).

Rough-In Dimension = (Entire length of row + 1/2") x 9-1/8"





TYPE:
CATALOG #:
JOB:

AA & AATB SERIES

Metal Halide

*RECESSED Adjustable Accents for Drywall and T-Bar
To match the look of the AK & AKTB Series Wall Washers*

SYSTEM

Recessed fixture that houses two or four adjustable accent lamps. Utilizes high color rendering Par 20 or 30 Metal Halide lamps. These lamps provide excellent color rendering, long life and high light output. The fixture is designed to look similar to the AK & AKTB Series wall wash fixtures and may be used in conjunction with them. UL/CUL Damp Location listed.

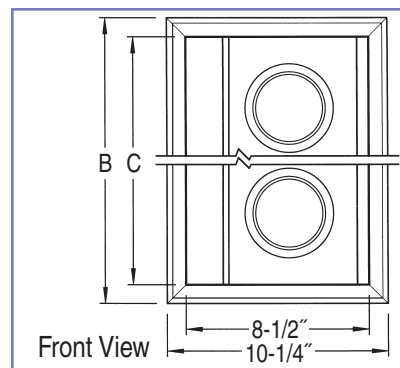
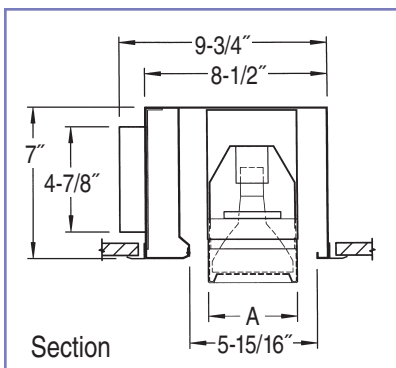
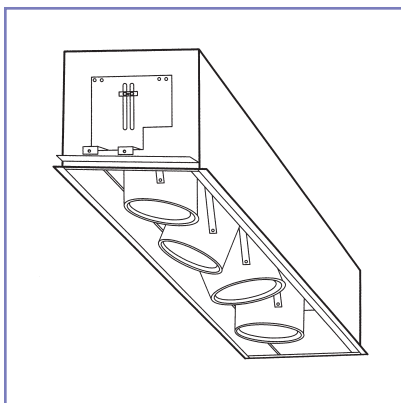
SPECIFICATIONS

Recessed housing with two or four adjustable accent lights for use with 39 or 70 watt Par 20 or 30 Metal Halide high color rendering lamps. Available for T-Bar or drywall installations. Individual lamp heads allow 290° swivel and 45° tilt. Internal access panel provides easy access to wiring and ballast.

TGIC polyester powder-coated housing is made of 22 gauge CRS with cover and knock-outs that provide quick wire access to the side of the fixture for through wiring. The trim for drywall fixtures is extruded aluminum.

OPTIONS

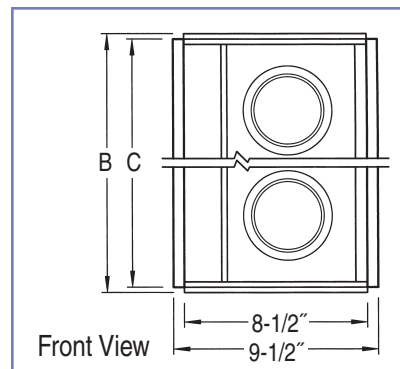
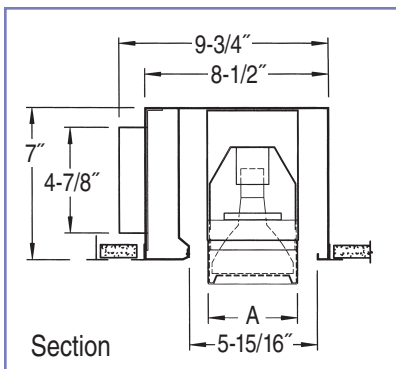
Ballast	120 Electronic (Standard) 277 Electronic
Finish	White (Standard) Custom -Custom
Lens	Color (Specify) Spread -SPL
Louver	Honey Comb -LVB



AA Series for Drywall Installations

Model No.	A	B	C	Rough-in Dimensions	Lamp
239 PAR20MHAA*	2-7/8"	13-3/4"	12"	9-1/8" x 12-1/2"	(2) 39 watt Par 20 Metal Halide
239 PAR30MHAA*	4-1/8"	13-3/4"	12"	9-1/8" x 12-1/2"	(2) 39 watt Par 30 Metal Halide
270 PAR30MHAA*	4-1/8"	13-3/4"	12"	9-1/8" x 12-1/2"	(2) 70 watt Par 30 Metal Halide
439 PAR20MHAA	2-7/8"	24-11/16"	22-15/16"	9-1/8" x 23-1/2"	(4) 39 watt Par 20 Metal Halide
439 PAR30MHAA	4-1/8"	24-11/16"	22-15/16"	9-1/8" x 23-1/2"	(4) 39 watt Par 30 Metal Halide
470 PAR30MHAA	4-1/8"	24-11/16"	22-15/16"	9-1/8" x 23-1/2"	(4) 70 watt Par 30 Metal Halide

* Can also be used in T-Bar ceilings.



AA Series for T-Bar Installations

Model No.	A	B	C	Lamp
439 PAR20MHAA-TB	2-7/8"	23-7/8"	23-7/16"	(4) 39 watt Par 20 Metal Halide
439 PAR30MHAA-TB	4-1/8"	23-7/8"	23-7/16"	(4) 39 watt Par 30 Metal Halide
470 PAR30MHAA-TB	4-1/8"	23-7/8"	23-7/16"	(4) 70 watt Par 30 Metal Halide

Continuous Mount – If the fixtures are being mounted in a continuous row in a drywall ceiling, add "CC" to the catalog number and provide the row configuration (i.e. (6) 6' rows).

ROUGH-IN DIMENSION = (Entire length of row, add all "C" lengths + 1/2") x 9-1/8"



TYPE:
CATALOG #:
JOB:

AAD & AADTB SERIES

Tungsten Halogen

*RECESSED Adjustable Accent Downlights
For Drywall and T-Bar*

SYSTEM

Recessed downlight fixture with four Par 30 or low-voltage MR-16 adjustable accent lights. This fixture centers the accent lights within the housing allowing for maximum vertical adjustment.
UL/CUL Damp Location listed.

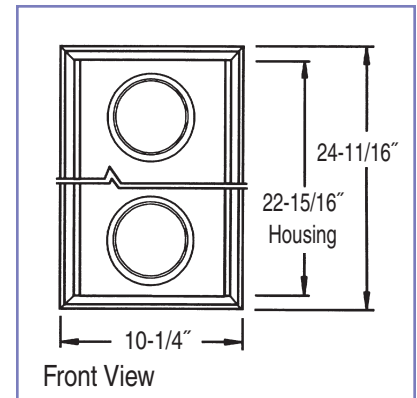
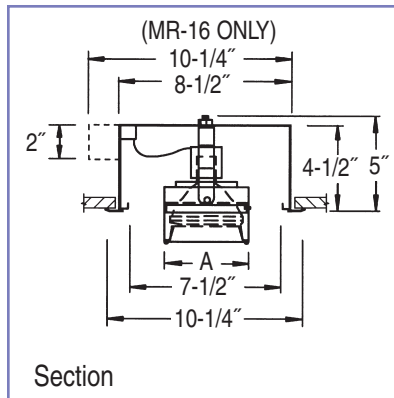
SPECIFICATIONS

Recessed downlight housing with four adjustable accent lights for use with (4) 50 watt Par 30 or low-voltage MR-16 lamps in T-Bar or drywall installations. Individual lamp heads allow 290° swivel and 40° tilt. The 5" deep housing allows access to the fixture wiring when the wire channel is removed. An additional panel is provided in the MR-16 fixture for access to the 12 volt transformers.

TGIC polyester powder-coated housing is made of 22 gauge CRS with cover and knock-outs that provide quick wire access to the back of the fixture for through wiring. Fixture face and lamp cylinders have white finish and the housing interior is black.

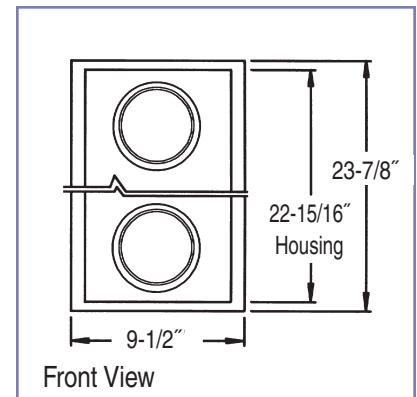
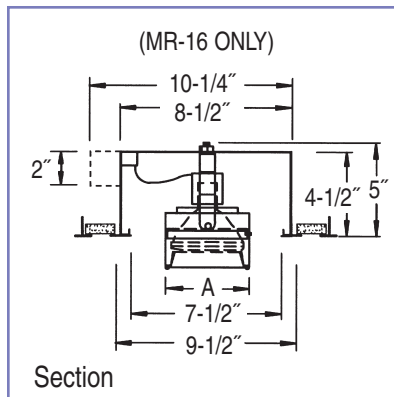
OPTIONS

Trim Finish	White (Standard) Custom -Custom
Lens	Color (Specify) Spread -SPL
Louver	Honey Comb -LVB



AAD SERIES for Drywall Installations

Model No.	A	Rough-In Dimensions	Lamp
450 MR-16AAD	3"	9-1/8" x 23-1/2"	(4) 50 watt MR-16
450 PAR30AAD	4-1/8"	9-1/8" x 23-1/2"	(4) 50 watt Par 30



AADTB SERIES for T-Bar Installations

Model No.	A	Lamp
450 MR-16AAD-TB	3"	(4) 50 watt MR-16
450 PAR30AAD-TB	4-1/8"	(4) 50 watt Par 30

Continuous Mount – If the fixtures are being mounted in a continuous row in the ceiling, add "CC" to the catalog number and provide the row configuration (i.e. (6) 12' rows).

Rough-In Dimension = (Entire length of row + 1/2") x 9-1/8"

