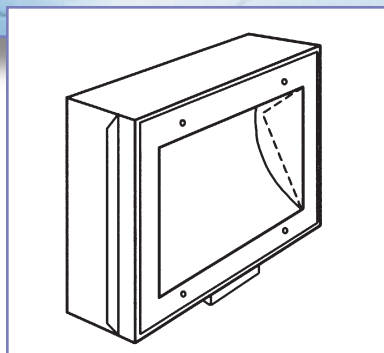
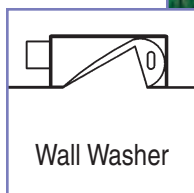
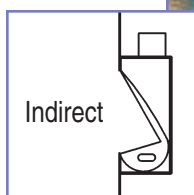


**ENGINEERED
LIGHTING PRODUCTS**



CP SERIES

*RECESSED Exterior or Concrete Pour
Low Level Floodlight*



Project
The Colony
Newport Beach, California
Specifier
LDB Inc.
Tustin, California
Photographer
Mark Dell'Aquila
Long Beach, California
Lighting
126QDCP, 26 watts

*Ideal placement is
18" to 36" from the
bottom edge of fixture
to the ground.*



TYPE:
CATALOG #:
JOB:

CP SERIES

RECESSED Exterior or Concrete Pour
Low Level Floodlight

SYSTEM

Recessed wet location low level floodlight suitable for concrete pour applications. Recess depth of 4". The regressed lens design provides very low brightness. Compact fluorescent lamps combined with the high purity aluminum reflector system provides high light levels with low energy. UL/CUL Wet Location listed.

U.S. Patent #5,142,459

SPECIFICATIONS

Recessed wet location low level floodlight for one or two compact fluorescent lamps. Fixture recess is 4" deep and the one piece, formed reflector is high purity aluminum (99.9%) with 95% reflectance.

Housing is made of 18 gauge electro-plated galvanized steel, which is TGIC polyester powder coated and suitable for recessed exterior or concrete pour. Formed aluminum face plate attaches with tamper proof screws and has a gasketed 3/16" acrylic regressed lens. Attached J-box suitable for through wiring.

OPTIONS

Ballast Low Temp 120 HPF Electronic (Standard)
Low Temp 277 HPF Electronic
Magnetic -MG
Emergency (Some Models) -EPP

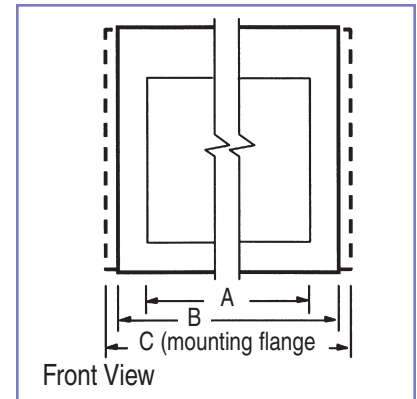
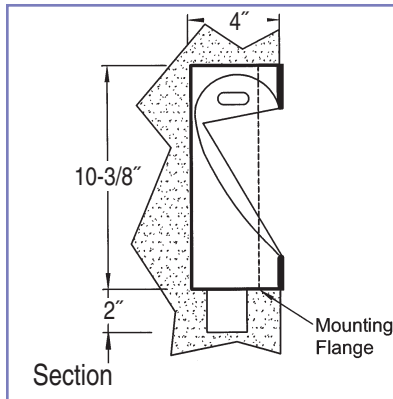
Finish Black (Standard)
Frame Bronze -BZ
Custom -Custom

Fixture Electro-Plated Galvanized Steel (Standard)
Stainless Steel -SS

Lens Regressed Acrylic (Most Models)
Regressed Polycarbonate -LEX
Flat Acrylic -FL
Flat Polycarbonate -FL-LEX
Flat Tempered Glass -TGL

Reflector Diffuse Silver (Standard)
Stepped Diffuse Silver -ST

Recessed Flush mount lens frame is standard



Model No.	A	B	C	Lamp
113PLCP	7-7/8"	10-3/4"	11-3/4"	13 watt PL
213PLCP	15-7/8"	19"	20"	(2) 13 watt PL
118QDCP	7-7/8"	10-3/4"	11-3/4"	18 watt Quad
126QDCP	7-7/8"	10-3/4"	11-3/4"	26 watt Quad
127QDCP*	7-7/8"	10-3/4"	11-3/4"	27 watt Quad
126TTCP	7-7/8"	10-3/4"	11-3/4"	26 watt Triple Tube
132TTCP-LEX	7-7/8"	10-3/4"	11-3/4"	32 watt Triple Tube
142TTCP-FL-LEX	7-7/8"	10-3/4"	11-3/4"	42 watt Triple Tube
226QDCP	15-7/8"	19"	20"	(2) 26 watt Quad
227QDCP*	15-7/8"	19"	20"	(2) 27 watt Quad
226TTCP	15-7/8"	19"	20"	(2) 26 watt Triple Tube
232TTCP-LEX	15-7/8"	19"	20"	(2) 32 watt Triple Tube
242TTCP-FL-LEX	15-7/8"	19"	20"	(2) 42 watt Triple Tube
139BXCP	15-7/8"	19"	20"	39 watt Biax
140BXCP	22-1/4"	25-3/8"	26-3/8"	40 watt Biax
150BXCP	22-1/4"	25-3/8"	26-3/8"	50 watt Biax
155BXCP	22-1/4"	25-3/8"	26-3/8"	55 watt Biax
240BXCP	44-1/4"	48"	49"	(2) 40 watt Biax
250BXCP	44-1/4"	48"	49"	(2) 50 watt Biax
255BXCP	44-1/4"	48"	49"	(2) 55 watt Biax

*Magnetic ballast with starting temperatures at -20° for 120volt and 15° for 277volt.

NOTE: All fixtures, except where noted use electronic ballast with -20° starting temperature.

