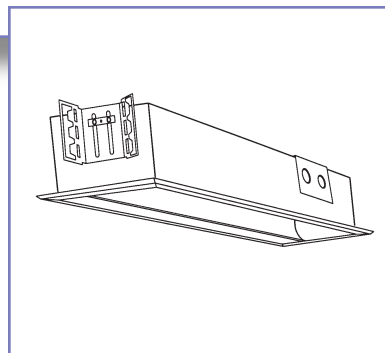
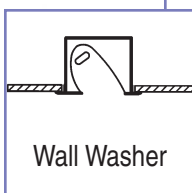
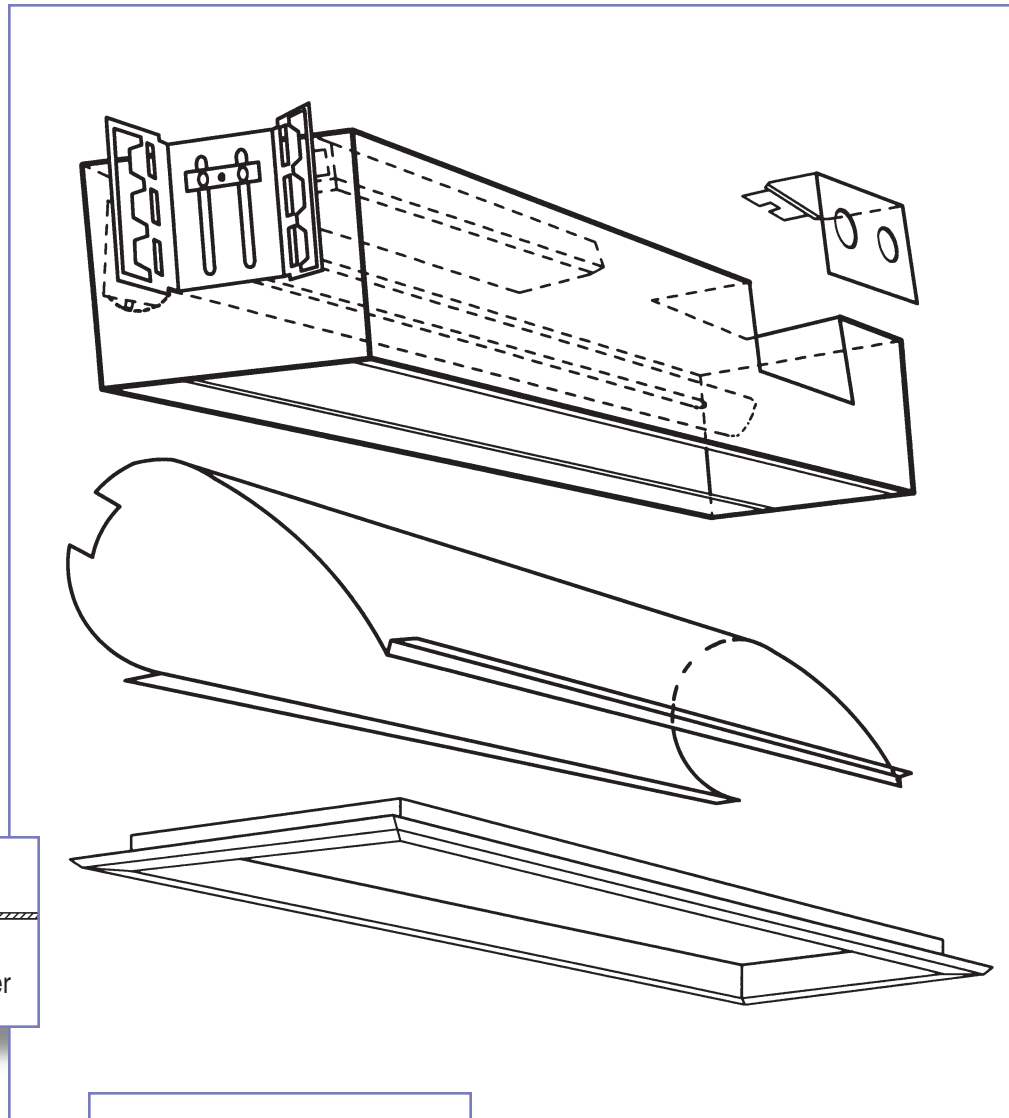


ENGINEERED
LIGHTING PRODUCTS



DW SERIES

*RECESSED Display Wall Washer
For Plaster or Drywall*



*Ideal placement is
8" to 12" from the
front edge of fixture
to the surface you
are lighting.*



TYPE:
CATALOG #:
JOB:

DW SERIES

*RECESSED Display Wall Washer
For Plaster or Drywall*

SYSTEM

Narrow, recessed compact fluorescent wall wash fixtures, specifically designed for close placement to the wall (less than 2"). Formed aluminum reflector design provides even unscalped illumination with no glare and offers exceptional lamp shielding. UL/CUL Damp Location listed.

U.S. Patent #5,142,459

SPECIFICATIONS

Narrow, recessed fluorescent wall washer for use with Biax, T-5 & T-8 lamps. Strong vertical throw of light allows the fixture to be placed closer to the wall than a typical wall wash unit. The one-piece, formed reflector is high-purity aluminum (99.9%) with 95% reflectance. It is easily removable without tools for access to the ballast and wiring. Reflector design provides complete lamp shielding even when viewed directly beneath the fixture.

TGIC polyester powder coated housing is made of 22 gauge CRS with cover and knock-outs that provide quick wire access to side or back of fixture for through wiring. Trim is extruded aluminum.

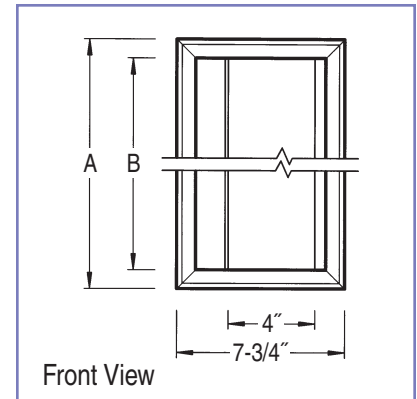
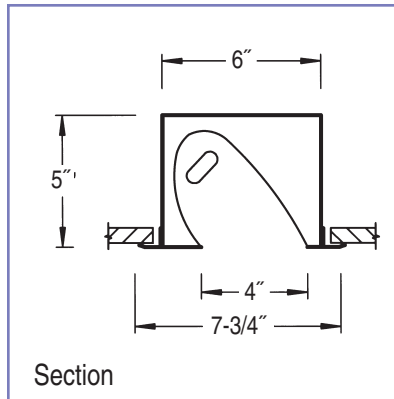
Continuous Mount – If fixtures are being mounted in a continuous row in the ceiling, add "CC" to catalog number and provide row configuration (i.e. (6) 12' rows).

Rough-In Dimension = (Entire length of row, add all "B" lengths + 1/2") x 6-5/8".

OPTIONS

Ballast	120 HPF Electronic (Standard) 277 HPF Electronic Dimming (Some models) -DM Emergency (Some models) -EPP Magnetic -MG
Finish	White (Standard) Custom -Custom
Mounting	Continuous
Lens	Mini Lens -ML Full Lens -FL**
Louver	Parallel Blade Louver -LV
Reflectors	Diffuse Silver (Standard) Specular Silver -SP Painted White -W
Trimless	Plaster to Fixture Opening -TL (Opening is 4" x B" dim.)

** Full Lens attaches in the trim frame for single units, however it must attach with screws for all "CC" (Continuous) units, mounted end to end.



Model No.	A	B	Rough-in Dimensions	Lamp
140 BXDW	24-11/16"	22-15/16"	6-5/8" x 23-1/2"	40 watt Biax
150 BXDW*	24-11/16"	22-15/16"	6-5/8" x 23-1/2"	50 watt Biax
155 BXDW*	24-11/16"	22-15/16"	6-5/8" x 23-1/2"	55 watt Biax
240 BXDW	48-11/16"	46-15/16"	6-5/8" x 47-1/2"	(2) 40 watt Biax
250 BXDW*	48-11/16"	46-15/16"	6-5/8" x 47-1/2"	(2) 50 watt Biax
255 BXDW*	48-11/16"	46-15/16"	6-5/8" x 47-1/2"	(2) 55 watt Biax
114 T-5DW*	24-11/16"	22-15/16"	6-5/8" x 23-1/2"	14 watt T-5
124 T-5DW*	24-11/16"	22-15/16"	6-5/8" x 23-1/2"	24 watt T-5 HO
121 T-5DW*	37-3/4"	36"	6-5/8" x 36-1/2"	21 watt T-5
139 T-5DW*	37-3/4"	36"	6-5/8" x 36-1/2"	39 watt T-5 HO
128 T-5DW*	48-11/16"	46-15/16"	6-5/8" x 47-1/2"	28 watt T-5
154 T-5DW*	48-11/16"	46-15/16"	6-5/8" x 47-1/2"	54 watt T-5 HO
117 T-8DW	25-3/4"	24"	6-5/8" x 24-1/2"	17 watt T-8
125 T-8DW	37-3/4"	36"	6-5/8" x 36-1/2"	25 watt T-8
132 T-8DW	49-3/4"	48"	6-5/8" x 48-1/2"	32 watt T-8

* Magnetic ballast not available.