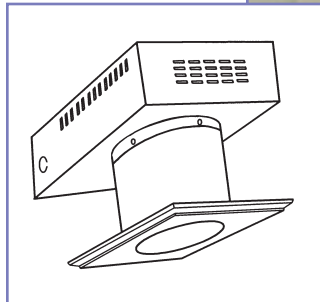
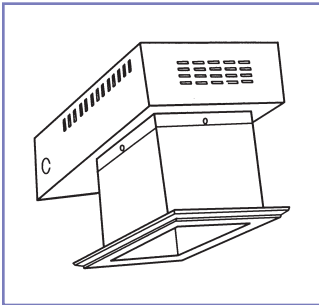


**ENGINEERED
LIGHTING PRODUCTS**



HITC SERIES

*RECESSED Hole In The Ceiling Niche
For Plaster or Drywall*



Project
Residence

Photographer
Kenneth Rice Photography
Oakland, California



Project
Louisiana State University
Baton Rouge, Louisiana

Specifier
Trahan Architects
Baton Rouge, Louisiana

*Cast Downlights integrate
into your ceiling for the
custom built look of a
drywall light niche.*



TYPE:
CATALOG #:
JOB:

HITC SERIES

*RECESSED Hole In The Ceiling Niche
For Plaster or Drywall*

SYSTEM

Recessed, GRG (Glass-fiber Reinforced Gypsum) square or round down light fixture. The cast plaster fixture actually appears to be part of your ceiling and looks like a custom formed drywall "light niche" that blends with any interior motif. I.C. / Airtight options are available.

UL/CUL Damp Location listed.

Patent Pending.

SPECIFICATIONS

Recessed fixture for use with several compact fluorescent, incandescent and PAR metal halide options. The GRG fixture is fiberglass reinforced cast plaster with integral electrical components. All electrical components are accessible through the bottom of the fixture. Casting mounts directly to stud construction. Allowance is made for 5/8" gypsum board construction butting fixture.

OPTIONS

Ballast & Transformers	120 Electronic (Standard) 277 Electronic Dimming (Some models) -DM Magnetic Q-Trans (as shown) -QT
I.C. and Airtight	Available (as shown) -IA
Frosted Acrylic Lens	Fluorescent Models Only -ML-F
Frosted Glass Lens	Lift & Shift Lens(as shown) -LSGL
Residential Height	4" Apertures only, 7-7/8"Ht. -8H
Custom Heights	Available, Consult Factory

Note: All double lamp fluorescent fixtures are available with a single lamp. Change the first number to a "1".

Example: #242TT-HITCS-8 Double Lamp Fixture
#142TT-HITCS-8 Single Lamp Fixture

Model No. **	Drawing	A	B	C	D	E	F	Lamp
140A19-HITC (S or R)-4 ♦	5	4-1/2"	9-1/8"	11-1/2"	8-1/4"	6"	5-1/2"	Max 40 watt A-19
150PAR-HITC (S or R)-4-IA	8	4-1/2"	10-3/4"	14-3/8"	8-1/4"	5-1/8"	14-1/8"	Max 50 w Par30
175PAR-HITC (S or R)-4 ♦	7	4-1/2"	9-1/8"	11-1/2"	8-1/4"	6"	5-1/2"	Max 75 w Par30
150MR16-HITC(S or R)-4-IA	4	4-1/2"	10-3/4"	14-3/8"	8-1/4"	5-1/8"	14-1/8"	*Max 50 w MR-16
165MR16-HITC(S or R)-4-LSGL-QT	3	4-1/2"	9-3/4"	11-1/2"	8-1/4"	4-1/4"	5-1/2"	Max 65 w MR-16
165MR16-HITC(S or R)-4 ♦	1	4-1/2"	9-1/8"	11-1/2"	8-1/4"	4-3/4"	5-1/2"	*Max 65 w MR-16
165MR16-HITC(S or R)-4-LSGL	2	4-1/2"	9-7/8"	11-1/2"	8-1/4"	5-5/8"	5-1/2"	Max 65 w MR-16
1100A19-HITC (S or R)-6	5	6"	11-1/8"	14-1/4"	9-3/4"	6-1/8"	8-1/8"	Max 100 watt A-19
1100A19-HITC (S or R)-6-LSGL	6	6"	11-1/8"	14-1/4"	9-3/4"	6-1/8"	8-1/8"	Max 100 watt A-19
150PAR-HITC (S or R)-6-IA	9	6"	11-1/8"	14-1/4"	9-3/4"	6-1/8"	8-1/8"	Max 50 w Par30
190PAR-HITC(S or R)-6	9	6"	11-1/8"	14-1/4"	9-3/4"	6-1/8"	8-1/8"	Max 90 w Par38
213QD-HITC(S or R)-6	10	6"	11-1/8"	15-1/2"	9-3/4"	6-1/8"	8-1/8"	(2) 13 w Quad
213QD-HITC(S or R)-6-LSGL	11	6"	11-1/8"	15-1/2"	9-3/4"	6-1/8"	8-1/8"	(2) 13 w Quad
218TT-HITC(S or R)-6 +	10	6"	11-1/8"	15-1/2"	9-3/4"	6-1/8"	8-1/8"	(2) 18 w Triple Tube
218TT-HITC(S or R)-6-LSGL +	11	6"	11-1/8"	15-1/2"	9-3/4"	6-1/8"	8-1/8"	(2) 18 w Triple Tube
226TT-HITC(S or R)-6 +	10	6"	11-1/8"	15-1/2"	9-3/4"	6-1/8"	8-1/8"	(2) 26 w Triple Tube
226TT-HITC(S or R)-6-LSGL +	11	6"	11-1/8"	15-1/2"	9-3/4"	6-1/8"	8-1/8"	(2) 26 w Triple Tube
1150PAR-HITC(S or R)-8	9	8"	12-1/4"	13-1/2"	11-3/4"	8-1/4"	10"	Max 150 w Par38
213QD-HITC(S or R)-8	10	8"	12-1/4"	18-1/2"	11-3/4"	8-1/4"	10"	(2)13 w Quad
213QD-HITC(S or R)-8-LSGL	11	8"	12-1/4"	18-1/2"	11-3/4"	8-1/4"	10"	(2)13 w Quad
218QD-HITC(S or R)-8 +	10	8"	12-1/4"	18-1/2"	11-3/4"	8-1/4"	10"	(2)18 w Quad
218QD-HITC(S or R)-8-LSGL +	11	8"	12-1/4"	18-1/2"	11-3/4"	8-1/4"	10"	(2)18 w Quad
218TT-HITC(S or R)-8 +	10	8"	12-1/4"	18-1/2"	11-3/4"	8-1/4"	10"	(2) 18 w Triple Tube
218TT-HITC(S or R)-8-LSGL +	11	8"	12-1/4"	18-1/2"	11-3/4"	8-1/4"	10"	(2) 18 w Triple Tube
226TT-HITC(S or R)-8 +	10	8"	12-1/4"	18-1/2"	11-3/4"	8-1/4"	10"	(2) 26 w Triple Tube
226TT-HITC(S or R)-8-LSGL +	11	8"	12-1/4"	18-1/2"	11-3/4"	8-1/4"	10"	(2) 26 w Triple Tube
232TT-HITC(S or R)-8 +	10	8"	12-1/4"	18-1/2"	11-3/4"	8-1/4"	10"	(2) 32 w Triple Tube
232TT-HITC(S or R)-8-LSGL +	11	8"	12-1/4"	18-1/2"	11-3/4"	8-1/4"	10"	(2) 32 w Triple Tube
242TT-HITC (S or R)-8 +	10	8"	12-1/4"	18-1/2"	11-3/4"	8-1/4"	10"	(2) 42 w Triple Tube
242TT-HITC (S or R)-8-LSGL +	11	8"	12-1/4"	18-1/2"	11-3/4"	8-1/4"	10"	(2) 42 w Triple Tube
139MHPAR-HITC(S or R)-8	12	8"	17-5/8"	8-1/8"	11-3/4"	8-1/4"	8-1/8"	39 w Metal Halide Par 30
170MHPAR-HITC(S or R)-8	12	8"	17-5/8"	8-1/8"	11-3/4"	8-1/4"	8-1/8"	70 w Metal Halide Par 38
1150PAR-HITC(S or R)-10	9	10"	14-1/4"	14-5/8"	13-3/4"	10-1/8"	10"	Max 150 w Par38
232TT-HITC(S or R)-10 +	10	10"	14-1/4"	19-5/8"	13-3/4"	10-1/8"	10"	(2) 32 w Triple Tube
232TT-HITC(S or R)-10-LSGL +	11	10"	14-1/4"	19-5/8"	13-3/4"	10-1/8"	10"	(2) 32 w Triple Tube
242TT-HITC(S or R)-10 +	10	10"	14-1/4"	19-5/8"	13-3/4"	10-1/8"	10"	(2) 42 w Triple Tube
242TT-HITC(S or R)-10-LSGL +	11	10"	14-1/4"	19-5/8"	13-3/4"	10-1/8"	10"	(2) 42 w Triple Tube

* MR-16 Fixture Supplied with protective lens. + Available with Dimming Ballast

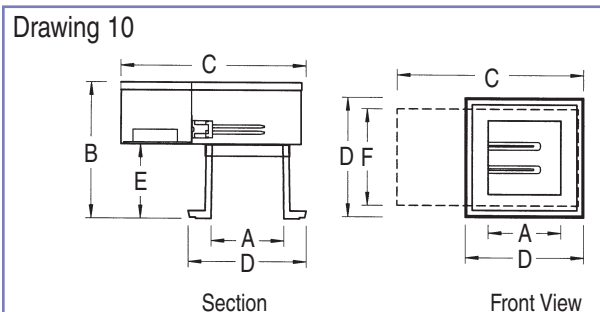
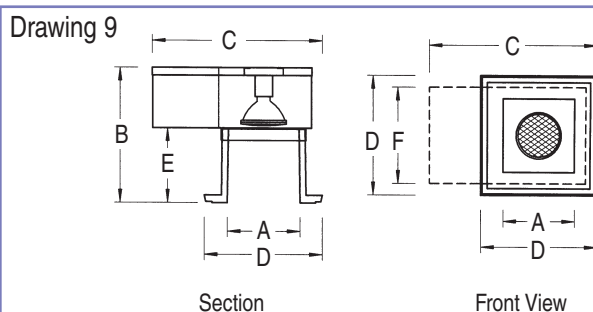
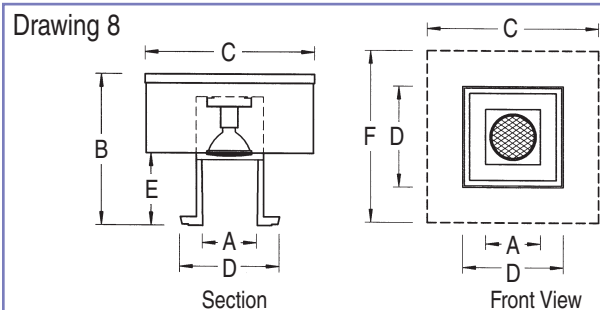
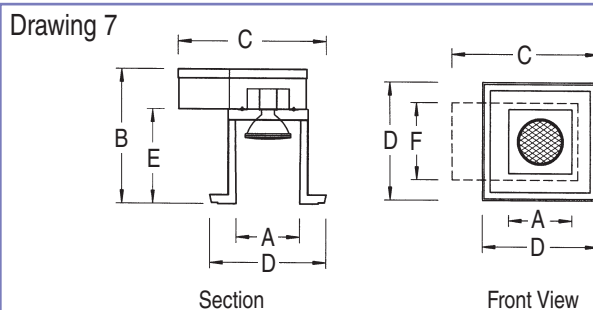
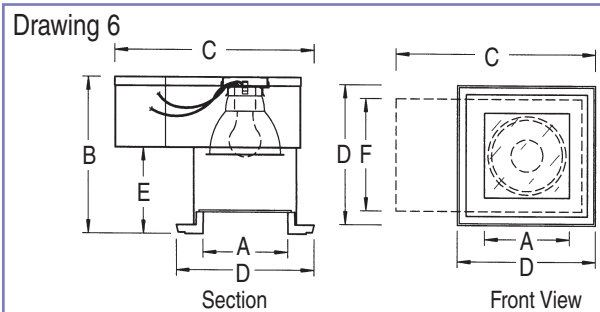
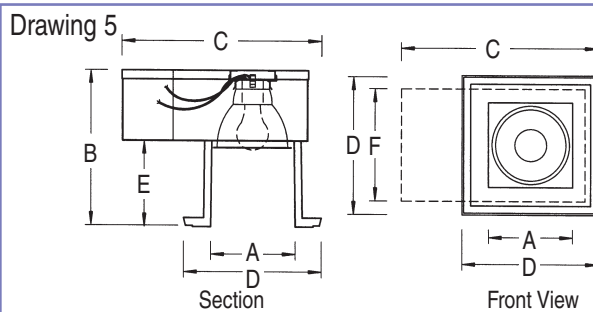
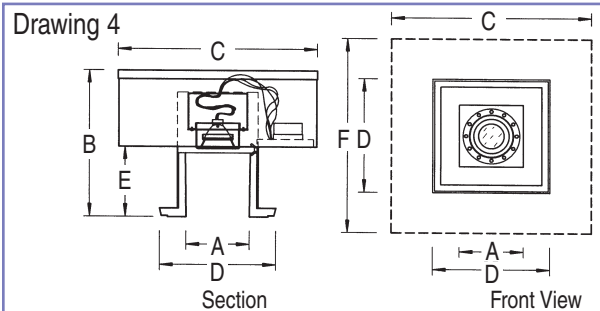
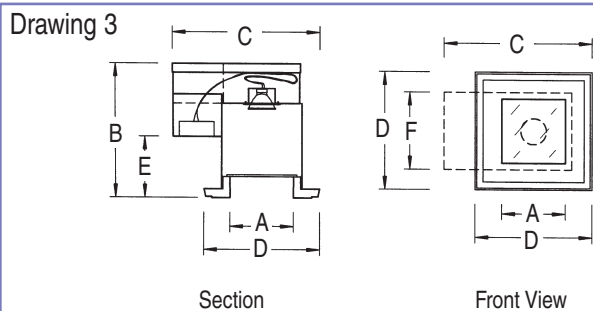
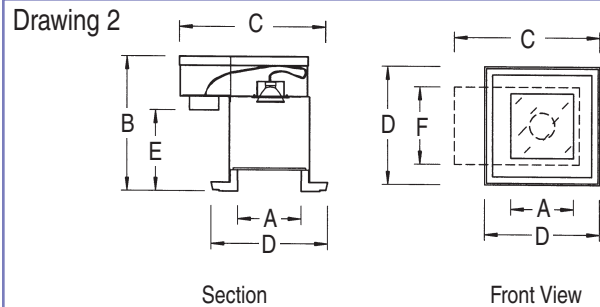
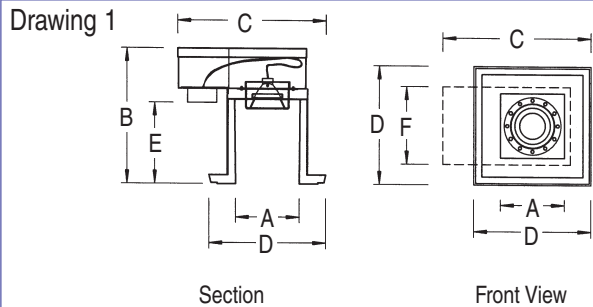
** S or R in Model Number indicates Square or Round Aperture. ♦ Available for Residential Height of 7-7/8" (Add 8H)



TYPE:
CATALOG #:
JOB:

HITC SERIES

*RECESSED Hole In The Ceiling Niche
For Plaster or Drywall*



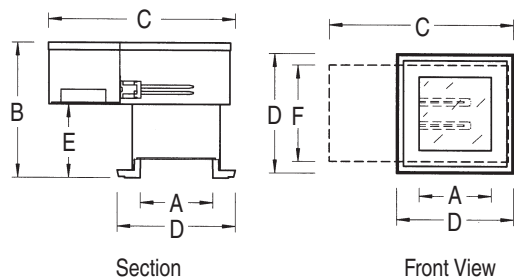


TYPE:
CATALOG #:
JOB:

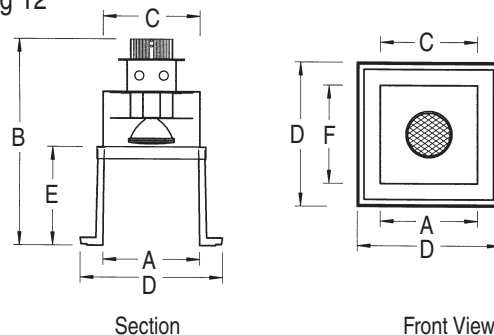
HITC SERIES

*RECESSED Hole In The Ceiling Niche
For Plaster or Drywall*

Drawing 11



Drawing 12



SEE DETAILED INSTALLATION INSTRUCTIONS FOR EACH MODEL

INSTALLATION

NOTE: Fixture should be installed by the drywall contractor and wired by the electrical contractor.

- 1) Fixture casting mounts directly to studs.
- 2) Install drywall to the edge of the casting.
- 3) Use standard drywall tape and joint compound at the seam edges.
- 4) Sand and finish like typical drywall seam.
- 5) Finish fixture and ceiling.
- 6) Install metal electrical unit and make connections.

Finished fixture appears to be a custom formed drywall light niche.

