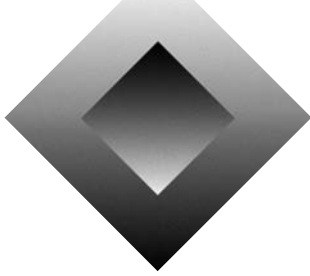
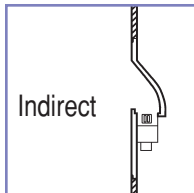
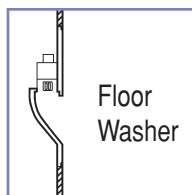
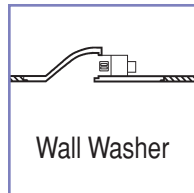


ENGINEERED  
LIGHTING PRODUCTS



# HITW SERIES

*RECESSED Hole In The Wall Light Niche  
For Plaster or Drywall*



Project  
Dr. Rosen & Shepard D.D.S.  
Westlake Village, California

Specifier  
Mar-Vista Sales  
Santa Paula, California

Photographer  
Mark Dell'Aquila  
Long Beach, California

Lighting  
155BX-HITW-8x29, 55 watts

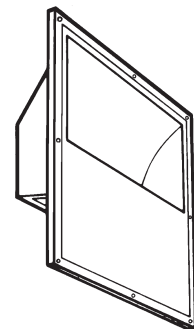


Project  
Colorado Residence  
Architect  
Davis Partnership Architects  
Denver, Colorado

Specifier  
Onie Chamberlain  
Centerline Resources, Inc.  
Denver, Colorado

Photographer  
Ron Ruscio  
Greenwood Village, Colorado

Lighting  
155BX-HITW-8x29, 55 watts



*Cast Fixtures with asymmetric  
light wash that integrate into  
your wall or ceiling for the  
custom built look of a drywall  
light niche.*



TYPE:  
CATALOG #:  
JOB:

# HITW SERIES

RECESSED Hole In The Wall Light Niche  
For Plaster or Drywall

## SYSTEM

Recessed, GRG fiberglass reinforced composite fixture. The cast plaster fixture actually appears to be part of your wall and looks like a custom formed drywall "light niche" that blends with any interior motif. Shallow 3-1/2" fixture allows installation in a 4" wall while maintaining the one-hour fire rating.

UL/CUL Damp Location listed. Non I.C. Rated.

U.S. Patent Pending.

## SPECIFICATIONS

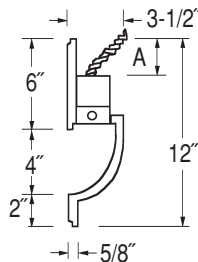
Recessed fixture for use with several compact fluorescent, incandescent, halogen and LED lamping options. The GRG fixture is fiberglass reinforced cast plaster with integral electrical components. The casting houses an electrical box that includes wiring, socket(s), reflector and ballast for fluorescent units. Electrical components are accessible through the fixture opening. Electrical box provides knock-outs for through wiring. Casting mounts directly to stud construction. Allowance is made for 5/8" gypsum board construction butting fixture.

## OPTIONS

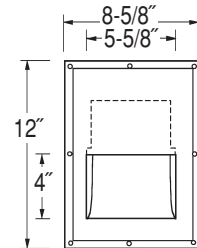
Ballast/ 120 Electronic (Standard)  
Circuit 277 Electronic (Some models)  
277 LED also available  
Dimming (Some models) –DM

Mini Flat Lexan (Fluorescent only) –ML-LEX  
Lens Frosted Lexan (Fluorescent only) –ML-LEXF  
Clear Tempered Glass –ML-TGL\*\*  
Frosted Tempered Glass – ML-TGLF\*

Louver Honeycomb, Silver – LVS  
Honeycomb, Black – LVB

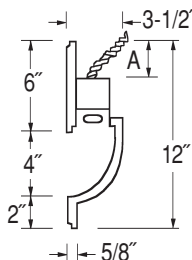


Section – Shown as Floor Wash

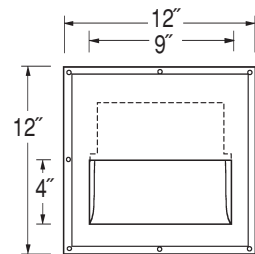


Front View

Model No.	A	Lamp
125HAL-HITW-4x6 *	1-1/4"	25 watt T-4 Halogen, G9
110IN-HITW-4x6 *	1-1/4"	10 watt C7 Nightlight
11C-HITW-4x6 **	3"	1 Row, 1 CCT White LED
22C-HITW-4x6 **	3"	2 Rows, 2 CCT White/Amber LED

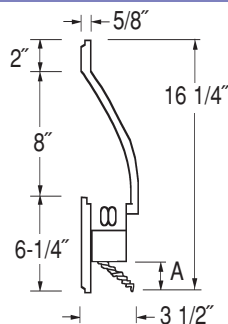


Section – Shown as Floor Wash

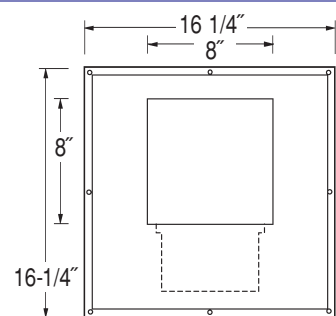


Front View

Model No.	A	Lamp
125IN-HITW-4x9	1"	25 watt T-8 Incandescent
140HAL-HITW-4x9 **	1"	40 watt T-4 Halogen, G9
105 PL-HITW-4x9	3"	5 watt PL
107 PL-HITW-4x9	3"	7 watt PL
109 PL-HITW-4x9	3"	9 watt PL



Section – Shown as Indirect



Front View

\* Fixtures Indicated are supplied Standard with Frosted Tempered Glass. Clear Tempered Glass may be substituted if required.

\*\* Fixtures Indicated are supplied Standard with Clear Tempered Glass. Frosted Tempered Glass may be substituted if required.

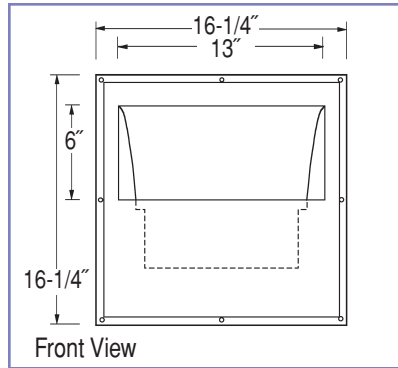
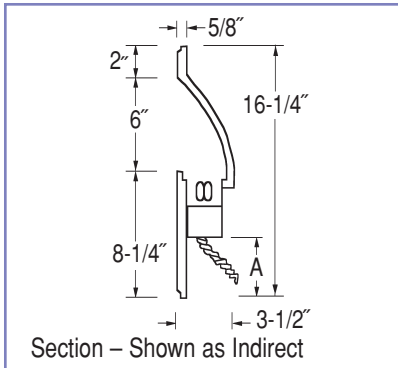
Model No.	A	Lamp
140HAL-HITW-8x8**	1"	40 watt T-4 Halogen, G9
118 QD-HITW-8x8	2-3/4"	18 watt Quad
126 TT-HITW-8x8	2-3/4"	26 watt Triple



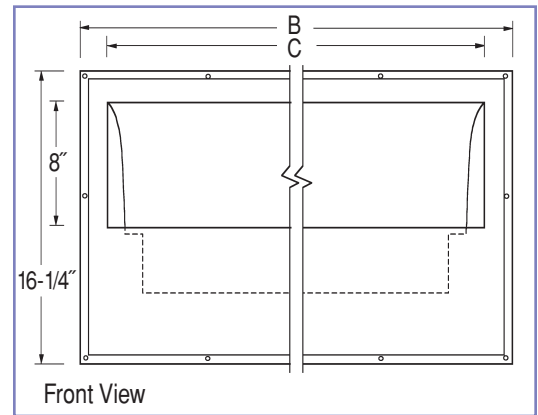
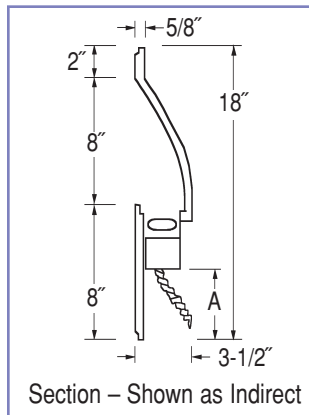
TYPE:  
CATALOG #:  
JOB:

# HITW SERIES

*RECESSED Hole In The Wall Light Niche  
For Plaster or Drywall*



Model No.	A	Lamp
160 IN-HITW-6x13	2-3/4"	60 watt T-10 Inc.
175 HAL-HITW-6x13	2-3/4"	75 watt BT-15 Halogen
113 PL-HITW-6x13	4-1/2"	13 watt PL
118 QD-HITW-6x13†	4-1/2"	18 watt Quad
126 QD-HITW-6x13†	4-1/2"	26 watt Quad
132 TT-HITW-6x13†	4-1/2"	32 watt Triple Tube
142 TT-HITW-6x13†	3-1/4"	42 watt Triple Tube



Model No.	A	B	C	Lamp
140 BX-HITW-8x29†	4-1/2"	32"	29"	40 watt Biax
150 BX-HITW-8x29†	4-1/2"	32"	29"	50 watt Biax
155 BX-HITW-8x29†	4-1/2"	32"	29"	55 watt Biax
240 BX-HITW-8x54†	4-1/2"	58"	54"	(2) 40 watt Biax
250 BX-HITW-8x54†	4-1/2"	58"	54"	(2) 50 watt Biax
255 BX-HITW-8x54†	4-1/2"	58"	54"	(2) 55 watt Biax
128 T5-HITW-8x54†	4-1/2"	58"	54"	28 watt T-5
154 T5-HITW-8x54†	4-1/2"	58"	54"	54 watt T-5 HO
132 T8-HITW-8x54†	4-1/2"	58"	54"	32 watt T-8

† Dimming Ballast Available for this model.



TYPE:  
CATALOG #:  
JOB:

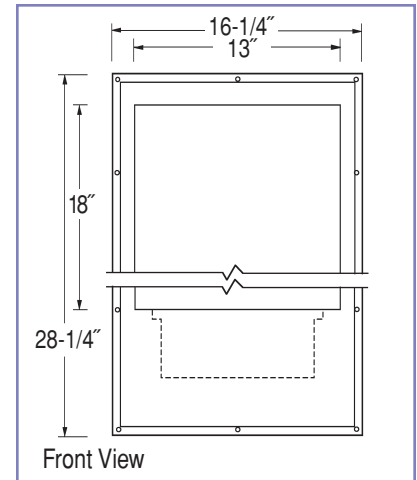
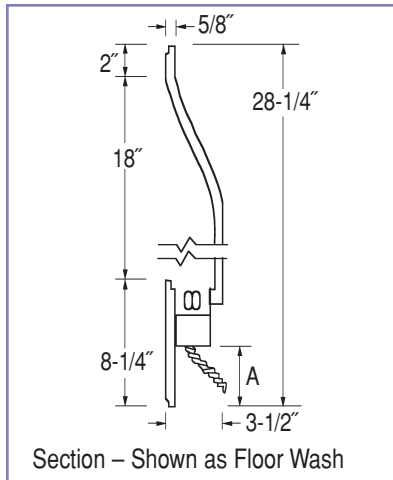
# HITW SERIES

*RECESSED Hole In The Wall Light Niche  
For Plaster or Drywall*

## INSTALLATION

**NOTE:** Fixture should be installed  
by the drywall contractor and  
wired by the electrical contractor.

SEE DETAILED  
INSTALLATION  
INSTRUCTIONS



Model No.	A	Lamp
118 QD-HITW-18x13†	4-1/2"	18 watt Quad
126 TT-HITW-18x13†	4-1/2"	26 watt Triple Tube

