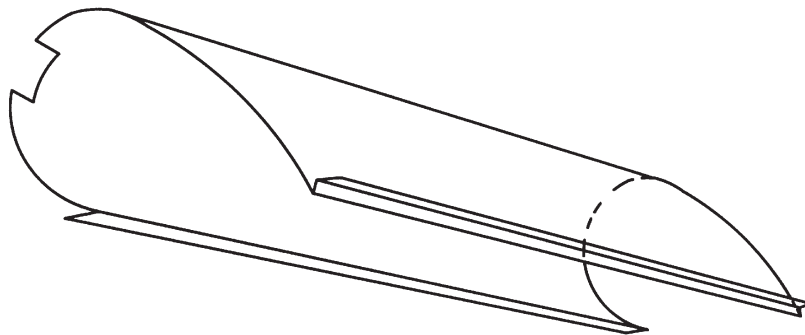
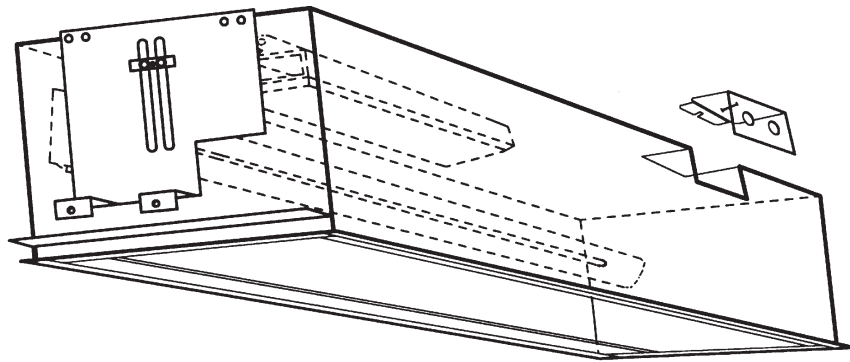


ENGINEERED  
LIGHTING PRODUCTS

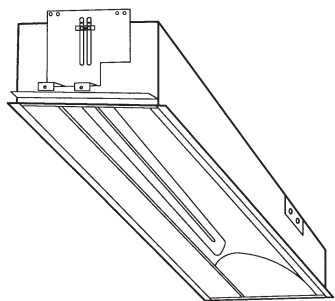


# MAXI-TB SERIES

*RECESSED Wall Washer For High T-Bar Ceilings*



Wall Washer



*Ideal placement  
(depending on wall height)  
is 48" to 66" from the front  
edge of fixture to the  
surface you are lighting.*



TYPE:  
CATALOG #:  
JOB:

## SYSTEM

The optical performance of the Maxi-TB wall wash fixture was designed specifically for retail spaces with 12' to 14' T-Bar ceilings. They provide 40% more light than typical wall wash fixtures in the critical merchandise area from 4' to 7' height while maintaining even illumination on the wall (within a 4:1 ratio). Utilizes Biax, T-5 or T-8 lamps. The formed aluminum reflector provides even unscalped illumination with no glare and offers exceptional lamp shielding. UL/CUL Damp Location listed.

U.S. Patent #5,142,459

## SPECIFICATIONS

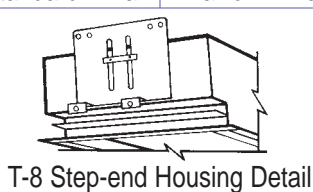
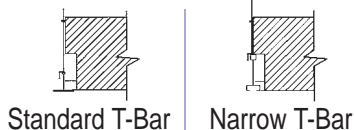
Recessed fluorescent wall washer for use with Biax, T-5 and T-8 lamps for T-Bar installations. The fixture is 5" deep with ballast(s) mounted in the housing. The one piece formed reflector is high purity aluminum (99.9%) with 95% reflectance. It is easily removable without tools for access to the ballast and wiring. Reflector design provides complete lamp shielding even when viewed directly beneath the fixture.

TGIC polyester powder coated housing is made of 22 gauge CRS with cover and knock-outs that provide quick wire access to side or back of fixture for through wiring.

## OPTIONS

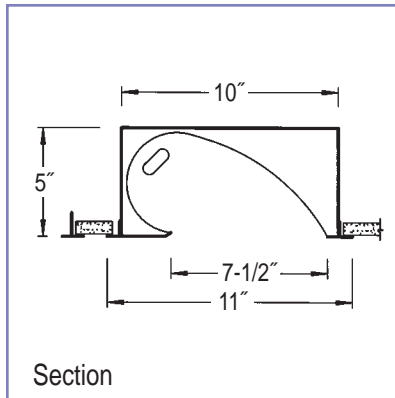
Ballast	120 HPF Electronic (Standard) 277 HPF Electronic Dimming (Some models) -DM Emergency (Some models) -EPP Magnetic -MG
Finish	White (Standard) Custom -Custom
Reflectors	Diffuse Silver (Standard) Specular Silver -SP
Louver	Parallel Blade Louver -LV

### T-8 LAMP FIXTURES

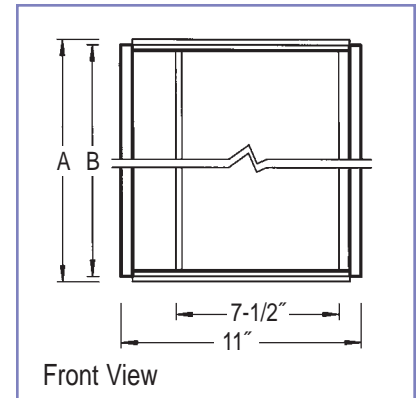


# MAXI-TB SERIES

RECESSED Wall Washer For High T-Bar Ceilings



Section



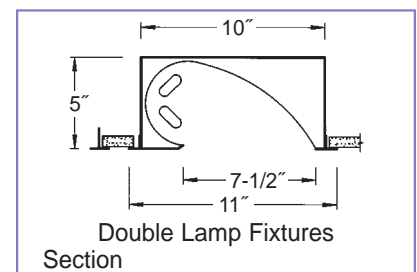
Front View

Model No.	A	B	Lamp
140 BXWW-MTB	23-7/8"	23-7/16"	40 watt Biax
150 BXWW-MTB*	23-7/8"	23-7/16"	50 watt Biax
155 BXWW-MTB*	23-7/8"	23-7/16"	55 watt Biax
240 BXWW-MTB2†	23-7/8"	23-7/16"	(2) 40 watt Biax
250 BXWW-MTB2†	23-7/8"	23-7/16"	(2) 50 watt Biax
255 BXWW-MTB2†	23-7/8"	23-7/16"	(2) 55 watt Biax
240 BXWW-MTB	47-7/8"	47-7/16"	(2) 40 watt Biax
250 BXWW-MTB*	47-7/8"	47-7/16"	(2) 50 watt Biax
255 BXWW-MTB*	47-7/8"	47-7/16"	(2) 55 watt Biax
440 BXWW-MTB†	47-7/8"	47-7/16"	(4) 40 watt Biax
450 BXWW-MTB*†	47-7/8"	47-7/16"	(4) 50 watt Biax
455 BXWW-MTB*†	47-7/8"	47-7/16"	(4) 55 watt Biax
214 T-5WW-MTB*	23-7/8"	23-7/16"	(2) 14 watt T-5
224 T-5WW-MTB*	23-7/8"	23-7/16"	(2) 24 watt T-5 HO
228 T-5WW-MTB*	47-7/8"	47-7/16"	(2) 28 watt T-5
254 T-5WW-MTB*	47-7/8"	47-7/16"	(2) 54 watt T-5 HO
217 T-8WW-MTB† (add 'CC' if mounting end to end)**	24"	23-7/16"	(2) 17 watt T-8
232 T-8WW-MTB† (add 'CC' if mounting end to end)**	48"	47-7/16"	(2) 32 watt T-8

\* Magnetic ballast not available.

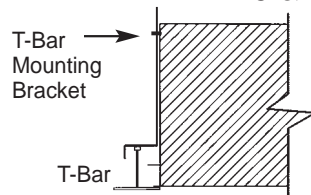
\*\* No more than 5 in a row.

† Double lamp fixtures.

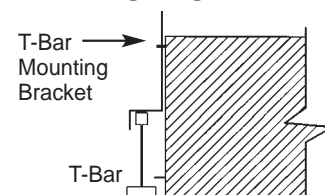


Double Lamp Fixtures  
Section

### T-5 & BIAx LAMP FIXTURES



Standard Size T-Bar



Narrow Size T-Bar