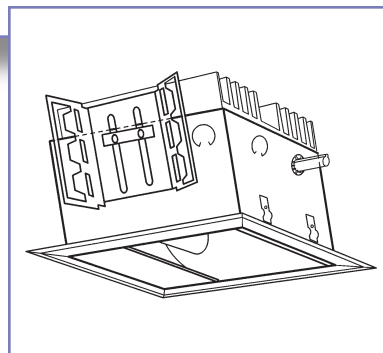
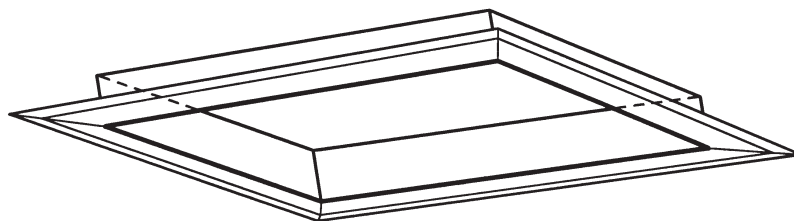
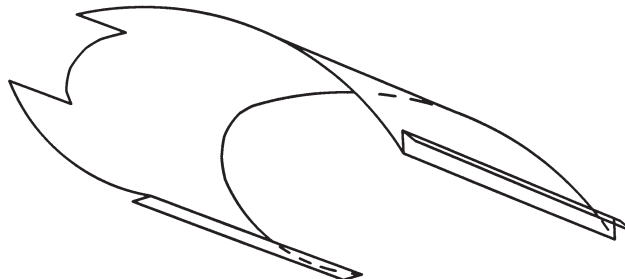
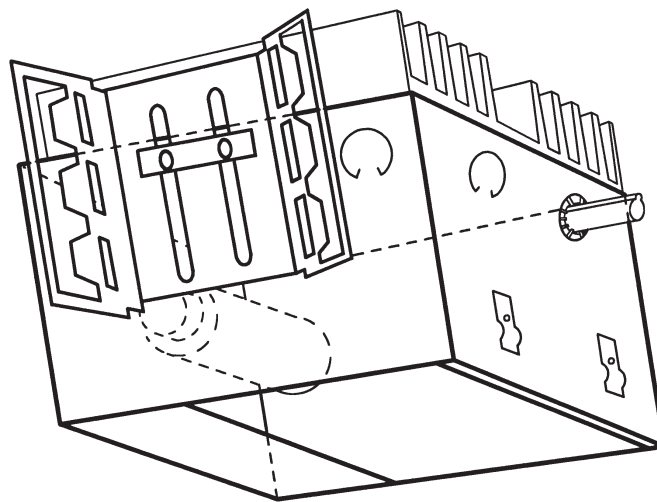
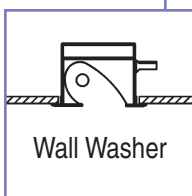
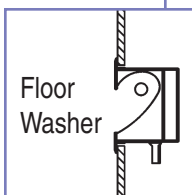
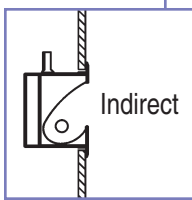


ENGINEERED
LIGHTING PRODUCTS



TH SERIES

*RECESSED Tungsten Halogen Wall Washer
For Plaster or Drywall*



*Ideal placement is
18" to 30" from the
front edge of fixture
to the surface you
are lighting.*



TYPE:
CATALOG #:
JOB:

TH SERIES

*RECESSED Tungsten Halogen Wall Washer
For Plaster or Drywall*

SYSTEM

Small, recessed tungsten halogen wall washer with formed aluminum reflector that provides even unscaloped illumination with no glare and offers exceptional lamp shielding.

Non I.C. Rated.

UL/CUL Damp Location listed.

U.S. Patent #5,142,459

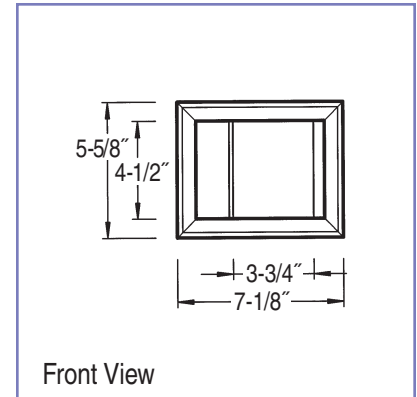
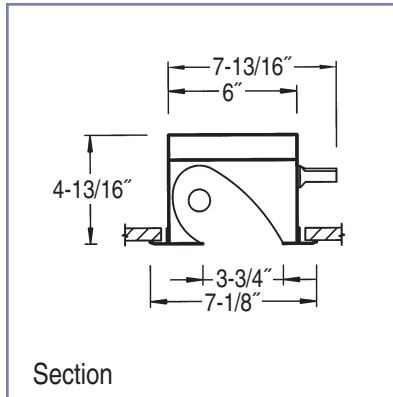
SPECIFICATIONS

Small, recessed wall wash fixture for use with a 75 watt 120 volt mini-can tungsten halogen lamp or a 20, 40 or 60 watt, 120 volt mini-can incandescent Performance lamp by Hybec. Fixture is 4-13/16" deep and the one piece, formed reflector is easily removable without tools for access to the wiring. The heavy duty aluminum heat sink assures cool operation and maximum lamp life. The socket pivots to allow easy relamping and access to protective glass shield. Reflector design provides complete lamp shielding even when viewed directly beneath fixture.

TGIC polyester powder coated housing is made of 22 gauge CRS with attached thermal fuse and finned aluminum heat sink. Knock-outs are provided for through wiring. Trim is extruded aluminum.

OPTIONS

Finish	White (Standard) Custom -Custom
Reflectors	White (Standard) Stepped Diffuse Silver -ST
Trimless	Plaster to Fixture Opening -TL (Opening is 4-1/2" x 3-3/4")



Model No.	Rough-In Dimensions	Lamp
175 THWW	5" x 6-5/8"	120 V Tungsten Halogen or Incandescent Mini-can 75 watt Max.