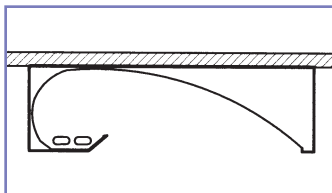


**ENGINEERED
LIGHTING PRODUCTS**



VTS SERIES

*SURFACE or Pendant Mount 2' x 2' Indirect
Video/Tele Conference Fixtures*



Project

Econolite Control Products, Inc.
Anaheim, California

Specifier

Leelite Design
Tustin, California

Photographer

Dell'Aquila Photography & Video
Long Beach, California

Lighting

250BXVT-TB, 110 watts
(Recessed T-Bar Version)

*Comfortably illuminates
the participants while
rendering an excellent
video image.*



TYPE:
CATALOG #:
JOB:

VTS SERIES

*SURFACE or Pendent Mount 2' x 2' Indirect
Video/Tele Conference Fixtures*

SYSTEM

Surface or pendent mount, compact fluorescent unit for Video/Tele Conferencing multi use spaces. The unique 2' x 2' indirect fixture provides even vertical illumination in three directions, forward and to the sides. It comfortably illuminates the participants involved in video conferencing while providing low level lighting at the front of the space for good contrast at the monitor, and keeps direct light off of the camera. UL/CUL Damp Location listed.

U.S. Patent #5142,459

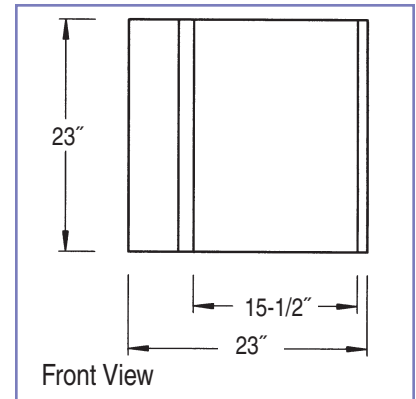
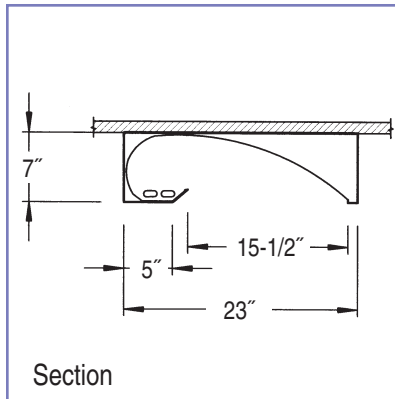
SPECIFICATIONS

Indirect 2' x 2' compact fluorescent fixture for surface or pendent mount installations. Unit utilizes two 40, 50 or 55 watt Biax lamps. The formed reflector combines white diffuse with high purity aluminum (99.9%) reflector material with 95% reflectance. The optical design allows energy efficient lighting layouts with excellent visual comfort for the speaker, the camera and the audience.

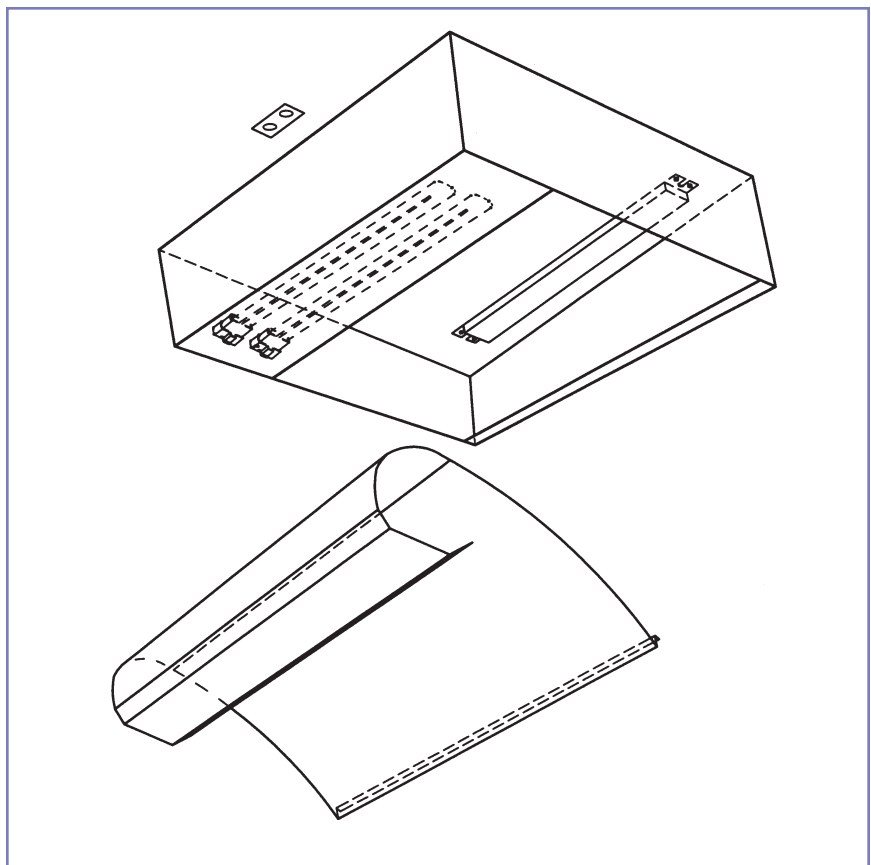
The spot weld construction housing is 22 gauge CRS and post painted with a white TGIC polyester powder coat. Cover and knock-outs provided for through wiring.

OPTIONS

- Ballast 120 Electronic Dimming (Standard)
 277 Electronic Dimming (Standard)
 Alternate Dimming Ballasts
 Electronic -Non Dim
- Finish White (Standard)
 Custom -Custom
- Reflector Combo White/Diffuse (Standard)
 White -W
- Louver Parallel Blade Louver -LV
 (Not Recommended)
- Mounting Surface J-Box (Standard)
 Canopy w/Stem -CS(FT of Stem)
 Ex. 250BXVTS-CS2



Model No.	Standard Dimming Ballast	Lamp
240BXVTS	Lutron Eco (3-Wire)	(2) 40 watt Biax
250BXVTS	Lutron Eco (3-Wire)	(2) 50 watt Biax
255BXVTS	Mark X (2-Wire)	(2) 55 watt Biax



NOTE: See the RECESSED VT&VTTB Series catalog cut, page number IR-18 for lighting advice and typical layout.