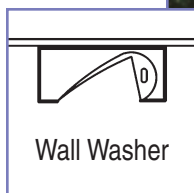


**ENGINEERED
LIGHTING PRODUCTS**

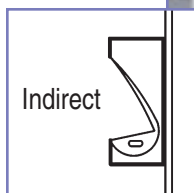


WLS SERIES

*SURFACE Mount Wet Location
Low Level Floodlight*



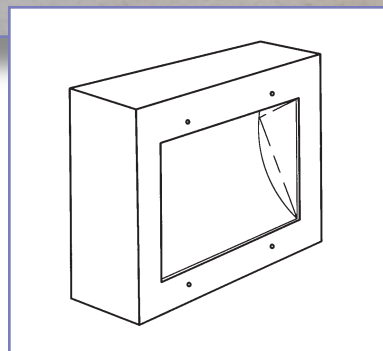
Wall Washer



Indirect



Floor
Washer



*Ideal placement is
18" to 36" from the
bottom edge of fixture
to the ground.*

Project

Doheny Eye Hospital
Los Angeles, California

Architect

Dworsky Associates
Los Angeles, California

Engineer

Cohen & Kanwar Inc.
Santa Monica, California

Photographer

Robin A. Higgin
South Pasadena, California

Lighting

226 QDWL-S, 52 watts



TYPE:
CATALOG #:
JOB:

WLS SERIES

*SURFACE Mount Wet Location
Low Level Floodlight*

SYSTEM

Surface mounted wet location low level floodlight with a maximum depth of 4". The regressed lens design provides very low brightness. Compact fluorescent lamps combined with the high purity aluminum reflector system provides high light levels with low energy.
UL/CUL Wet Location listed.

U.S. Patent #5,142,459

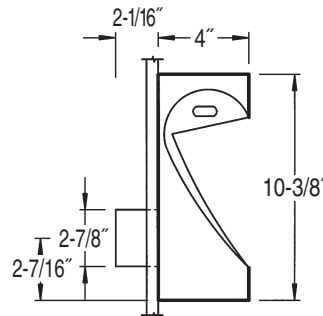
SPECIFICATIONS

Surface mounted wet location low level floodlight for one or two compact fluorescent lamps. Fixture is 4" deep and the one piece, formed reflector is high-purity aluminum (99.9%) with 95% reflectance.

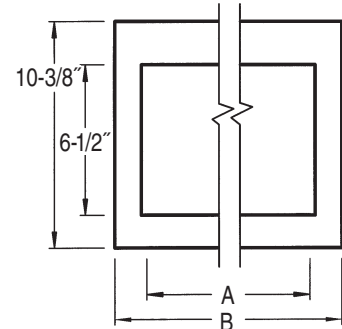
Housing is made of 18 gauge electro-plated galvanized steel, which is TGIC polyester powder coated and suitable for outdoor locations. Formed aluminum face plate attaches with tamper-proof screws and has a gasketed 3/16" acrylic regressed lens. Attached J-box suitable for through wiring.

OPTIONS

Ballast	Low Temp 120 HPF Electronic (Standard)
	Low Temp 277 HPF Electronic
	Emergency (Some models) -EPP
	Magnetic -MG
Finish	Black (Standard)
	Bronze -BZ
	Custom -Custom
Fixture	Electro-Plated Galvanized Steel (Standard)
	Stainless Steel -SS
Lens	Regressed Acrylic (Most Models)
	Regressed Polycarbonate -LEX
	Flat Acrylic -FL
	Flat Polycarbonate -FL-LEX
	Flat Tempered Glass -TGL
Reflector	Diffuse Silver (Standard)
	Stepped Diffuse Silver -ST



Section



Front View

Model No.	A	B	Lamp
113PLWLS	7-7/8"	10-3/4"	13 watt PL
213PLWLS	15-7/8"	19"	(2) 13 watt PL
118QDWLS	7-7/8"	10-3/4"	18 watt Quad
126QDWLS	7-7/8"	10-3/4"	26 watt Quad
127QDWLS*	7-7/8"	10-3/4"	27 watt Quad
126TTWLS	7-7/8"	10-3/4"	26 watt Triple Tube
132TTWLS-LEX	7-7/8"	10-3/4"	32 watt Triple Tube
142TTWLS-FL-LEX	7-7/8"	10-3/4"	42 watt Triple Tube
226QDWLS	15-7/8"	19"	(2) 26 watt Quad
227QDWLS*	15-7/8"	19"	(2) 27 watt Quad
226TTWLS	15-7/8"	19"	(2) 26 watt Triple Tube
232TTWLS-LEX	15-7/8"	19"	(2) 32 watt Triple Tube
242TTWLS-FL-LEX	15-7/8"	19"	(2) 42 watt Triple Tube
139BXWLS	15-7/8"	19"	39 watt Biax
140BXWLS	22-1/4"	25-3/8"	40 watt Biax
150BXWLS	22-1/4"	25-3/8"	50 watt Biax
155BXWLS	22-1/4"	25-3/8"	55 watt Biax
240BXWLS	44-1/4"	48"	(2) 40 watt Biax
250BXWLS	44-1/4"	48"	(2) 50 watt Biax
255BXWLS	44-1/4"	48"	(2) 55 watt Biax

*Magnetic ballast with starting temperatures at -20° for 120volt and 15° for 277volt.

NOTE: All fixtures, except where noted, use electronic ballast with -20° starting temperature.

