

# INSTALLATION INSTRUCTIONS

LS SERIES  
Full Face Lens Plate Mounting  
Fixtures are IC Rated

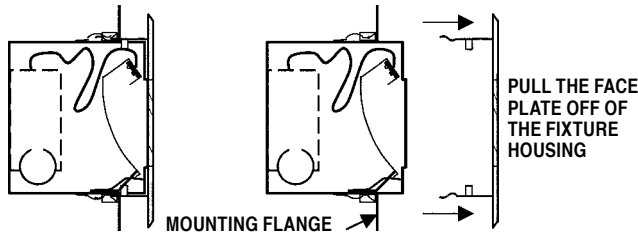
The ideal placement of these fixtures would be between 10" & 16" from the surface being lighted to the edge of the fixture.

FOR SUPPLY CONNECTIONS ENTERING THIS FIXTURE  
USE WIRE SUITABLE FOR AT LEAST 90° C

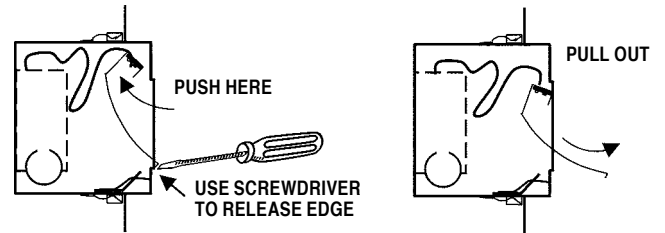
**\* INSTALLATION TO BE DONE IN ACCORDANCE WITH NEC AND APPLICABLE CODES \***

**ALUMINUM REFLECTOR CLEANING:** Clean reflector with soap & water or alcohol, i.e., Isopropyl Alcohol or other neutral PH factor solvents. Cleaning material should be non-abrasive. **DO NOT** use Ammonia & alkali solutions.

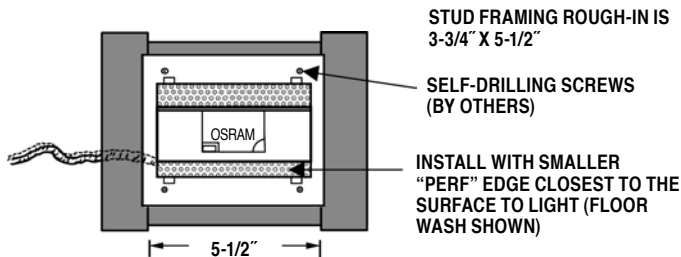
1. Remove Full Face Lens Plate & Reflector before installation. Full Face Lens Plate snaps into clips behind the mounting flange of fixture. Carefully pull the lens plate off of the fixture.



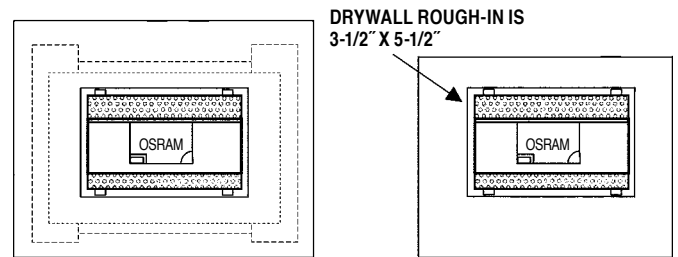
2. Remove reflector by pushing up on the lamp side to dislodge the other side. Carefully use screwdriver to grab edge of reflector then pull out of housing. **UNPLUG LED STRIP!**



3. Frame on two or four sides and attach to studs per local code. Place housing with the smaller perf edge closest to the surface to light. Connect power before closing the wall with drywall.

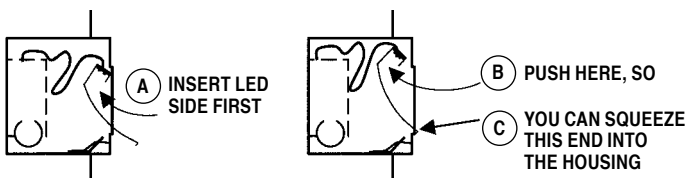


4. Install 5/8" drywall around the fixture, covering the mounting flange. Drywall rough-in should be 3-1/2" x 5-12" to allow clearance for the Full Face Lens Plate to snap on.

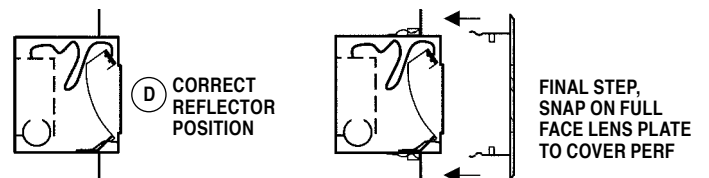


**REPLACING THE REFLECTOR & TRIM SHOULD BE THE LAST STEP – AFTER PAINTING AND FINISH WORK REMOVE THE PROTECTIVE PEEL AND REPLACE REFLECTOR.**

5. To replace the Reflector– **Plug LED strip into connector** from driver (**CONFIRM** correct polarity, and turn plug if wrong), then place the LED side into the fixture first (**SHOWN as Floor Wash**).



6. After all finish work is done. Snap on the Full Face Lens Plate. If it is not aligned with the opening of the fixture, turn it around to ensure the lens aligns with the opening.



# INSTALLATION INSTRUCTIONS

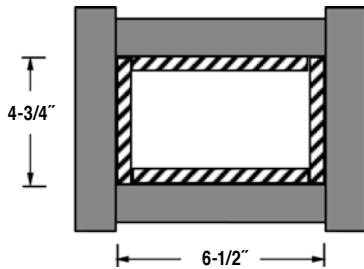
LS SERIES

Full Face Lens Plate Mounting – Special Installations  
Fixtures are IC Rated

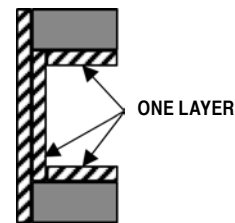
## ONE HOUR FIRE RATED WALL INSTALLATION: (VERIFY WITH YOUR LOCAL AUTHORITIES)

For one hour fire rated walls, the entire framed fixture “pocket” (5 sides) in the wall must be lined with 5/8” gypsum with the seams sealed. Fixtures must be framed on four sides. The LS Series fixtures are shallow enough to fit into a standard stud wall with the additional thickness of gypsum. Then finish installation as shown in steps #5 & 6.

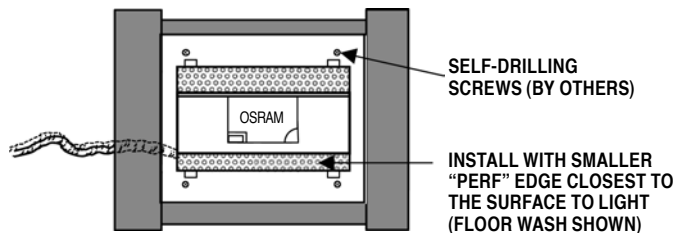
**A** STUD FRAMING ROUGH-IN  
IS 4-3/4" X 6-1/2"



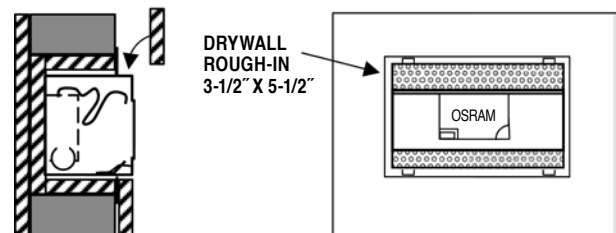
**B** LINE “POCKET” (5 SIDES)  
WITH GYPSUM & SEAL SEAMS



**C** CONNECT POWER & ATTACH  
FIXTURE TO STUDS



**D** CLOSE WALL, DRYWALL ROUGH-IN  
IS 3-1/2" X 5-1/4"



## BACK TO BACK INSTALLATION DETAIL

For Back to Back installations in standard walls, fixtures would be mounted similar to the fixtures on first page, but this section detail shows how the fixtures join together in the wall. Note that it is a one circuit installation with one driver for both fixtures.

For Full Face Lens Plate, One Circuit Installation

Sample Catalog #:

14W1LS-FFLP-BBM-2x4 with

14W1LS-FFLP-BBS-2x4

NOTE: YOU MUST SPECIFY  
THE THICKNESS OF WALL  
FRAMING SO CORRECT  
NIPPLE IS SUPPLIED

