

ELP

ENGINEERED LIGHTING
PRODUCTS

**Now with
LED options!**

SURFACE or Pendant Mount 2' x 2' Indirect
Video/Tele Conference Fixtures

VTS SERIES



Project

Econolite Control Products, Inc.
Anaheim, California

Specifier

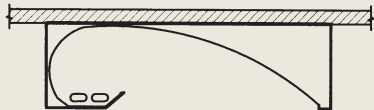
Leelite Design
Tustin, California

Photographer

Dell'Aquila Photography & Video
Long Beach, California

Lighting

250BXVT-TB, 110 watts
(Recessed T-Bar Version)



*Comfortably illuminates the
participants while rendering an
excellent video image.*

System

Video/Tele Conference fixtures. Unique, indirect 2' x 2' LED and fluorescent fixtures provide even, vertical illumination in three directions. They comfortably illuminate participants with minimal facial shadowing while keeping direct light/glare off of the monitor and camera.



TYPE:
CATALOG #:
JOB:

SURFACE or Pendant Mount 2' x 2' Indirect
Video/Tele Conference Fixtures

Specifications

Indirect 2' x 2' LED and compact fluorescent fixture for surface or pendant mount installations. The LED unit utilizes four high efficacy Sylvania modules at 80+ CRI totaling 44 watts and are rated up to 60,000 hrs. The fluorescent unit utilizes one or two 40, 50 or 55 watt Biax lamps. The unique 2' x 2' indirect fixture provides even, vertical illumination in three directions, forward and to the sides. The formed reflector for fluorescent combines white diffuse with high purity aluminum (99.9%) reflector material with 97% reflectance, while the LED uses only the high purity aluminum. The optical design allows energy efficient lighting layouts with excellent visual comfort for the speaker, the camera and the audience. It provides low level lighting at the front of the space for good contrast at the monitor, and keeps direct light off of the camera.

The spot weld construction housing is 22 gauge CRS and post painted with a white TGIC polyester powder coat. Cover and knock-outs provided for through wiring. All fluorescent fixtures are supplied standard with Luminaire Disconnect.

UL/CUL Damp Location listed.

c/CSA/us Listing, IC Rated ▲

Options

Ballast 120 or 277 Electronic Dimming
(Standard as shown)

For Alternate Dimming:

DM2 Lutron ECO Systems
DM3 Lutron Hi-Lume 3D
DM4 Advance Mark X
DM5 Advance Mark VII
DM Other -(Specify)

LED Driver 120/277 0-10 volt, Osram OT Dim
(Standard)

For Alternate Dimming:

DM6 3-wire/Digital, Lutron ECO
Systems L3D
DM7 2-wire, Lutron LTE (120 only)

LED 3500K (Standard)*
3000K - 30K
4000K - 40K

Reflector Combo White/Diffuse (Fluorescent)
Diffuse Silver 97 (LED)

Finish White (Standard)
Custom -Custom

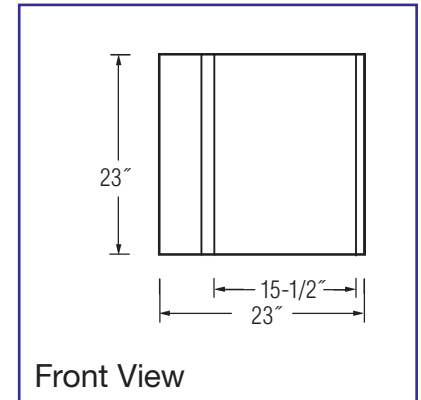
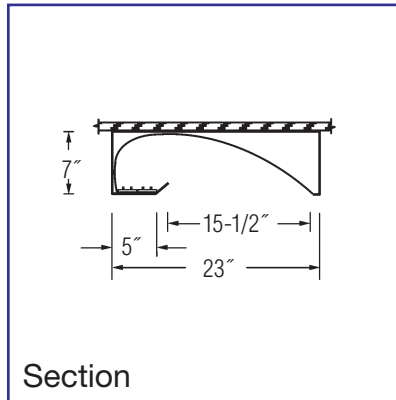
Louver Diffuse Silver Parallel Blade -LV
(Not Recommended)

Mounting Surface J-Box (Standard)
Canopy w/Stem -CS (FT of Stem)
Ex. 250BXVTS-CS2

+ Single lamp fixtures may be ordered if they are being mounted in a continuous row installation. Change the first number to a "1."

* Recommended color temperature for architectural installations.

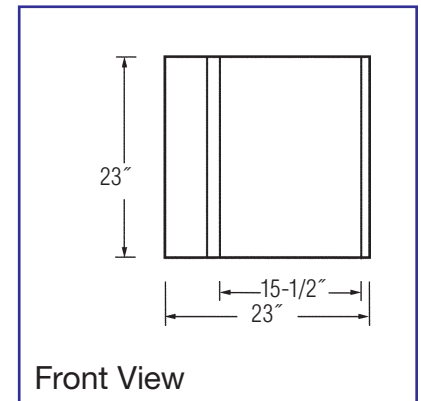
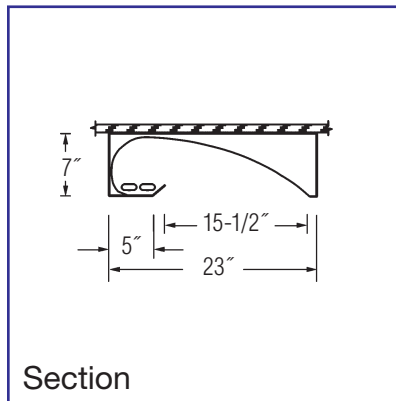
Note: Efficacy will vary depending on the ballast/driver used.



VTS Series - LED

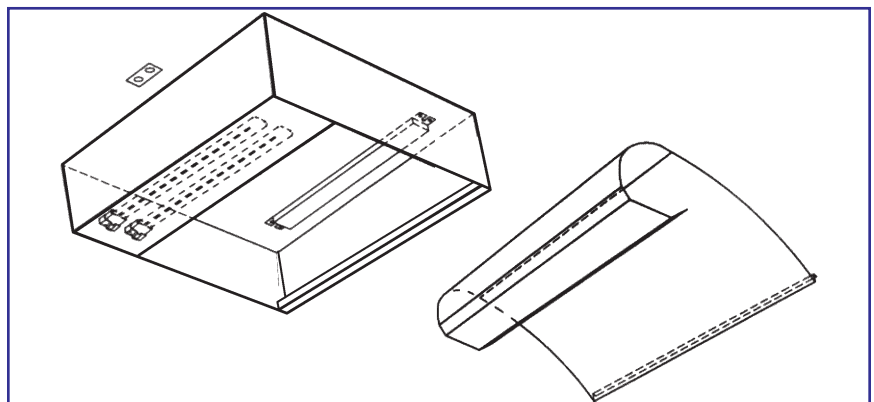
Model No.	Standard Dimming	Alternate Dim	Lamp	Efficacy
444W1VTS ▲	Osram OT	6 or 7	(4) 10.8 watt Modules, 1 CCT	87

Note: Sylvania provides a 5 year warranty on the lamp driver combination when using their LED driver for this unit.



VTS Series - Fluorescent

Model No.	Standard Dimming	Alternate Dim	Lamp	Efficacy
240BXVTS +	Lutron H3D	2, 4, or 5	(2) 40 watt Biax	42
250BXVTS +	Lutron H3D	2	(2) 50 watt Biax	43
255BXVTS +	Advance Mark X	2 or 5	(2) 55 watt Biax	42



NOTE: See the RECESSED VT&VTTB Series catalog cut, page number IR-21 for lighting advice and typical layout.