

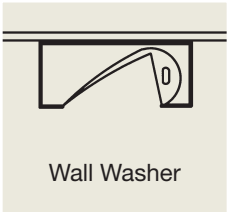
ELP

ENGINEERED LIGHTING
PRODUCTS

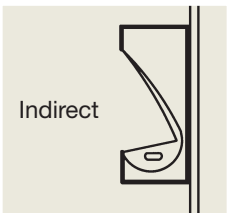
WLS SERIES

**Now with
LED options!**

SURFACE Mount Wet Location
Low Level Floodlight



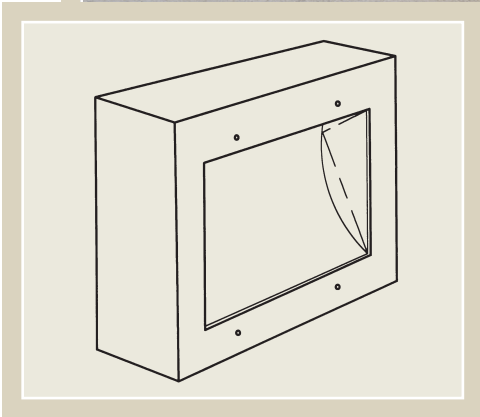
Wall Washer



Indirect



Floor
Washer



*Ideal placement is
18" to 36" from the
bottom edge of fixture
to the ground.*

Project
Doheny Eye Hospital
Los Angeles, California

Architect
Dworsky Associates
Los Angeles, California

Engineer
Cohen & Kanwar Inc.
Santa Monica, California

Photographer
Robin A. Higgin
South Pasadena, California

Lighting
226 QDWLS, 52 watts

System

Wet location low level floodlights with a shallow depth of only 4". Their unique Regress Lens design provides very low brightness. LED or fluorescent lamps combined with the high purity aluminum reflector system provides high light levels with low energy.



SURFACE Mount Wet Location Low Level Floodlight

TYPE:
CATALOG #:
JOB:

Specifications

Surface mounted wet location low level floodlight with LED for one or two compact fluorescent; or T-8 lamps. Fixture is 4" deep and the one piece, formed reflector is high purity aluminum (99.9%) with 97% reflectance. Combined with LED or fluorescent lamps, the reflector system provides high light levels with low energy.

Housing is made of 18 gauge electro-plated galvanized steel, which is TGIC polyester powder coated and suitable for outdoor locations. Formed aluminum face plate attaches with screws and has a gasketed 3/16" acrylic regressed lens in most models. The regressed lens design provides very low brightness. Attached J-box suitable for through wiring. All fluorescent fixtures are supplied standard with Luminaire Disconnect.

UL/CUL Wet Location listed.

c/CSA/us Wet Location Listed. ◆

U.S. Patent #5,142,459

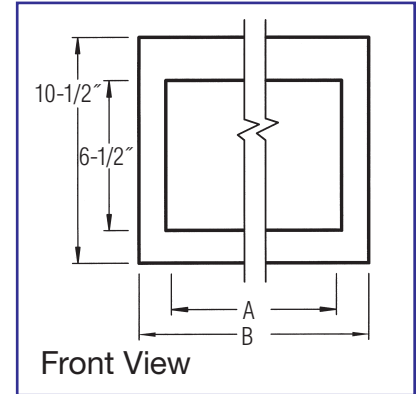
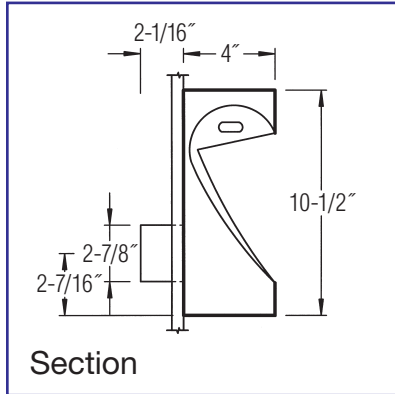
Options

- Ballast Low Temp 120 or 277 HPF (Standard)
- LED Driver 120-277 volt ◆
- LED Color 3000K (Standard) ◆
3500K -35 ◆
4000K -40 ◆
- Finish Black (Standard)
Bronze -BZ
Custom -Custom
- Fixture Electro-Plated Galvanized Steel (Standard)
Stainless Steel -SS
- Lens Supplied Standard as shown:
① Regressed Acrylic (Some Models)
② Regressed Polycarbonate -LEX (Some Models)
③ Flat Acrylic -FL (Some Models)
④ Flat Polycarbonate -FL-LEX (Available All Models)
⑤ Flat Tempered Glass -TGL (Available All Models)
- Reflector Diffuse Silver 97 (Standard)
Stepped Diffuse Silver -ST

NOTE: Sylvania provides a 5-year warranty on the lamp/driver combination for LED units. LEDs are rated up to 60,000 hours life.

Note: WLS Series fixtures project less than 2% of fixture lumens higher than 90 degrees from nadir (straight down) and in Zones L22 thru L24 can contribute to:

**LEED Sustainable Site Credit 8:
Light Pollution Reduction – 1 point**



Model No.	A	B	Standard Lens / Optional Lens	Lamp
111W1WLS ◆	7-7/8"	10-7/8"	① ②③④⑤	11 watt White LED
113PLWLS	7-7/8"	10-7/8"	① ②③④⑤	13 watt PL
118QDWLS	7-7/8"	10-7/8"	① ②③④⑤	18 watt Quad
126QDWLS-LEX	7-7/8"	10-7/8"	② ④⑤	26 watt Quad
126TTWLS-LEX	7-7/8"	10-7/8"	② ④⑤	26 watt Triple Tube
132TTWLS-LEX	7-7/8"	10-7/8"	② ④⑤	32 watt Triple Tube
142TTWLS-FL-LEX	7-7/8"	10-7/8"	④ ⑤	42 watt Triple Tube
213PLWLS	15-7/8"	19"	① ②③④⑤	(2) 13 watt PL
226QDWLS-LEX	15-7/8"	19"	② ④⑤	(2) 26 watt Quad
226TTWLS-LEX	15-7/8"	19"	② ④⑤	(2) 26 watt Triple Tube
232TTWLS-LEX	15-7/8"	19"	② ④⑤	(2) 32 watt Triple Tube
242TTWLS-FL-LEX	15-7/8"	19"	④ ⑤	(2) 42 watt Triple Tube
139BXWLS	15-7/8"	19"	① ②③④⑤	39 watt Biax
222W1WLS ◆	22-1/4"	25-3/8"	① ②③④⑤	(2) 11 watt White LED
140BXWLS	22-1/4"	25-3/8"	① ②③④⑤	40 watt Biax
150BXWLS	22-1/4"	25-3/8"	① ②③④⑤	50 watt Biax
155BXWLS	22-1/4"	25-3/8"	① ②③④⑤	55 watt Biax
124T-5WLS *	22-1/4"	25-3/8"	① ②③④⑤	24 watt T-5 HO
117T-8WLS	22-1/4"	25-3/8"	① ②③④⑤	17 watt T-8
240BXWLS	44-1/4"	48"	① ②③④⑤	(2) 40 watt Biax
250BXWLS	44-1/4"	48"	① ②③④⑤	(2) 50 watt Biax
255BXWLS	44-1/4"	48"	① ②③④⑤	(2) 55 watt Biax
154T-5WLS *	44-1/4"	48"	② ④⑤	54 watt T-5 HO
132T-8WLS	44-1/4"	48"	① ②③④⑤	32 watt T-8

* Standard T-5 lamps are available: for 2' fixture, change the Model # "24" to "14"; for 4' fixture, change "54" to "28"

NOTE: All fixtures use electronic ballast/driver with -20° starting temperature.

