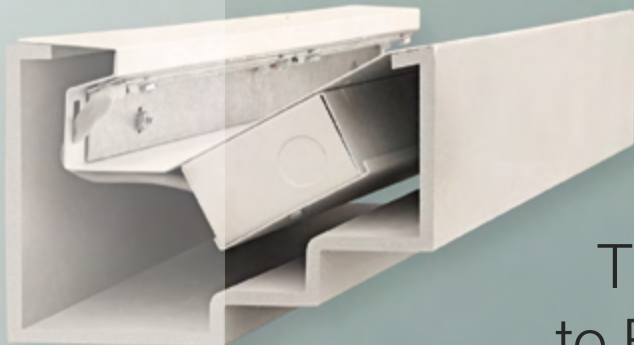


ELP

www.elplighting.com

Castings Integrate into the
Structure, Becoming One
with the Environment
Without Visible
Hardware



The Perfect Complement
to Exceptional Architecture



CAST GRG LUMINAIRE

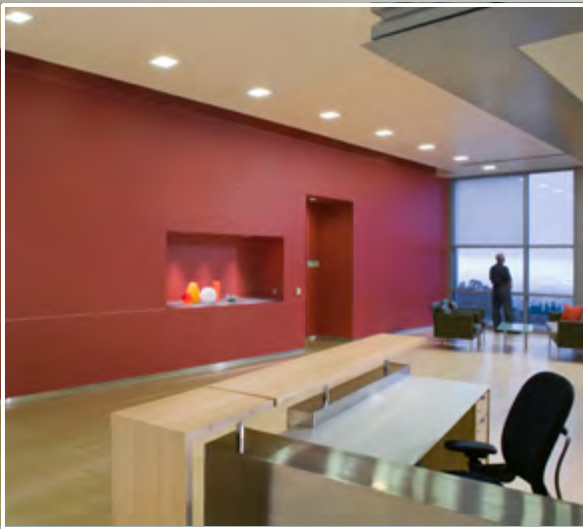
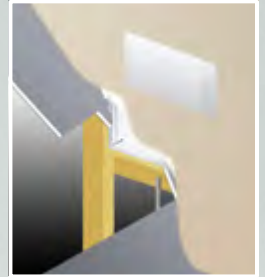
SYSTEM

Embrace the magic of light emanating from the building's interior through unobtrusive apertures. These cast GRG (Glass fiber Reinforced Gypsum) composite products integrate into the structure becoming part of the building. Once installed, they appear to be part of the wall or ceiling with no visible metal or trim from normal viewing angles. The resulting light radiates from a beautifully illuminated aperture that looks like a custom built drywall light niche that blends with any interior motif.



The *“Hole In The Wall,”*

HITW Series fixtures provide a smooth wash of asymmetric light into the space. The shallow, 3-1/2" depth allows the fixtures to be recessed into a standard 2 x 4 stud wall. Mount high and orient up to indirectly light the ceiling; or mount low, oriented down to illuminate the floor. Additionally, luminaires may be mounted in the ceiling for a wall wash effect. Numerous rectangular, square and arched apertures are offered and custom designs are available. Most models offer 1% dimming, while some LED units are supplied standard with 1% dimming.



The *“Hole In The Ceiling,”*

HITC Series fixtures deliver customized down lighting through round or square apertures. Luminaires provide excellent visual cut-off of metal components from normal viewing angles. Standard apertures are 4-1/2", 6", 8", 10" and a unique 18" casting that mimics the curve of a trumpet. Within the fixture, a frosted lens with minimal frame shields the LEDs from view. Custom apertures, shapes and sloped castings are available to personalize your installation. Supplied standard with 1% dimming for all LED models.



HITW SHEET



HITC SHEET



SITC SHEET



CLC SHEET



INSTALLATION & SERVICE

Luminaires are a dual-trade installation. The casting should be installed and joint seams finished by the drywall contractor and the electrical component should be wired and secured by the electrical contractor. Casting mounts to the building framing and is taped and finished with adjoining 5/8" drywall sheets. The integral LED lighting insert or top-hat is secured to the casting and wired to power. All electrical components are accessible through the fixture aperture for future servicing or replacement. LED units have 5 year warranty.

The **"Slot In The Ceiling,"**

SITC Series fixtures deliver customized down lighting through individual rectangular apertures or continuous rows that are assembled on-site. Individual, 6" wide units are available in 2', 3' and 4' lengths. Continuous row components are offered for 6", 10" and 13" widths and can be built to any length. Frosted lift & shift lenses shield the LEDs from view. Custom apertures are available to personalize your installation. Supplied standard with 1% dimming for all LED models.



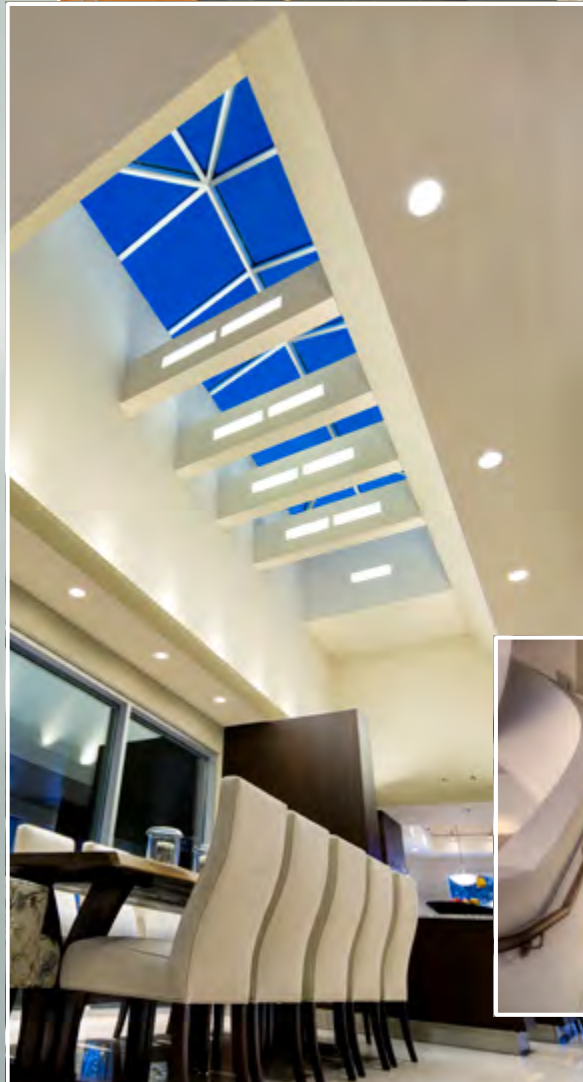
The **"Cornice Light Cove,"**

CLC Series cove lighting system combines a wall mounted, cast, decorative cove with a high performance lighting component. Optics are designed to illuminate the cove while projecting light out of the cove and into the space for usable, ambient lighting. Molded, decorative 8' castings cut labor cost. Reflector, lighting component units are supplied in 2', 3' and 4' lengths. Custom cove castings are available to personalize your installation. Supplied standard with 1% dimming for all LED models.



**QUALITY
MANUFACTURING
SINCE 1985!**

CAST GRG LUMINAIRES



FEATURING LED MODULES
AND DRIVERS BY

OSRAM

10768 Lower Azusa Road
El Monte, CA 91731 USA

(626) 579-0943

contact@elplighting.com

Please visit www.elplighting.com
to find your nearest representative.



Innovative Illumination